

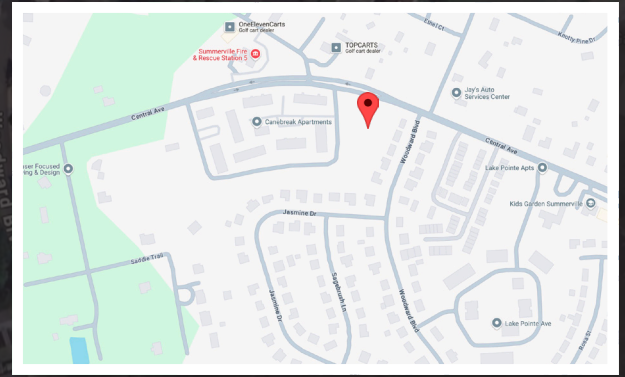
AVAILABLE - FOR SALE

0 CENTRAL AVENUE SUMMERVILLE, SC 29483



AVAILABLE:
1.93 ACRES

COMMERCIAL LAND



LOCATION

Nearby Retailers



OFFERED BY



(843) 856-4600
www.belklucy.com

Kevin Shields
kevin.shields@belklucy.com
(843) 936-1715 — direct office
(843) 593-7119 — mobile

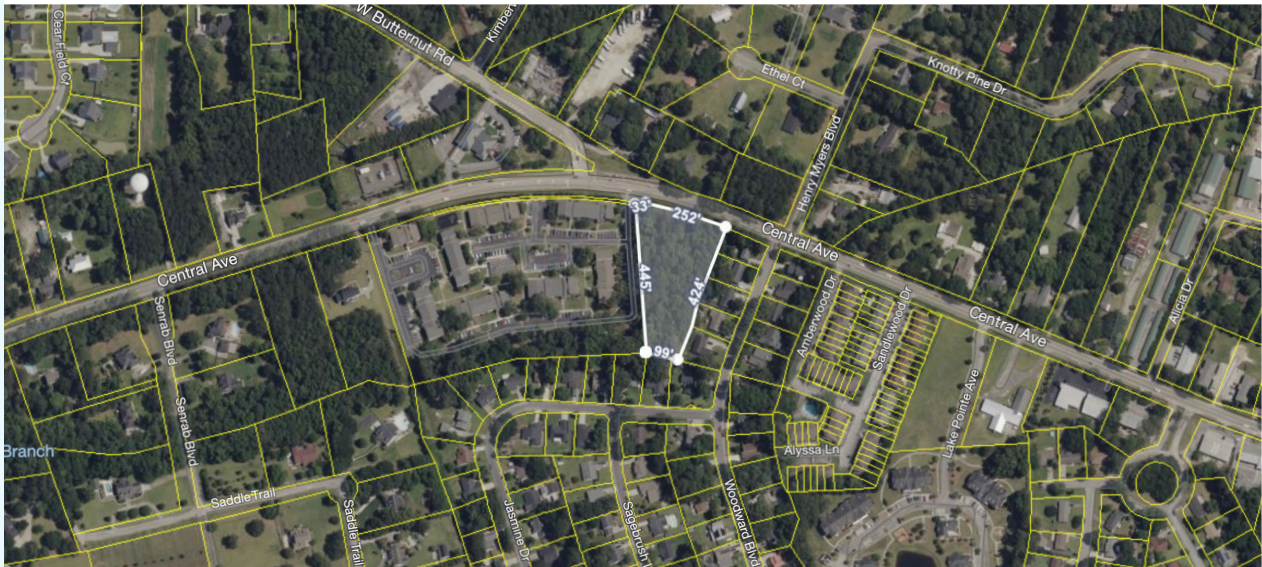
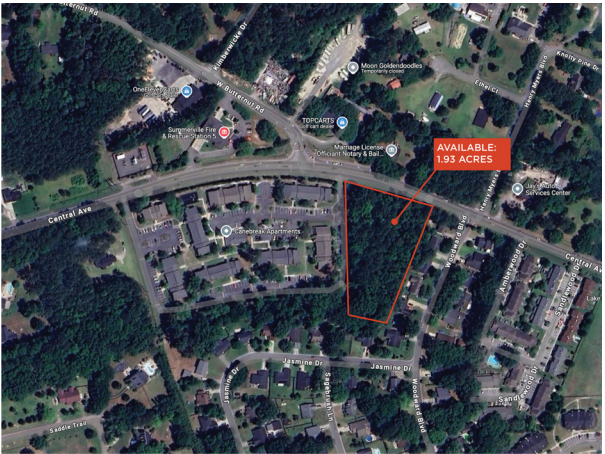
PROPERTY INFORMATION

PROPERTY DESCRIPTION

Belk | Lucy is pleased to present the exclusive listing for 0 Central Avenue in Summerville, SC. Situated on well travelled Central Avenue, this commercial lot has excellent visibility.

AREA DESCRIPTION

The town of Summerville is situated mostly in Dorchester County and is part of the 800,000-person Charleston, SC MSA. Summerville is a burgeoning community with a strong local economy, beautifully planned neighborhoods, excellent schools, rich history, and plenty of southern hospitality. In the past thirty years, the population of Summerville has increased exponentially as families, business people, and military personnel continue to flock to charming city.



TERMS AND CONDITIONS

Size	1.93 acres
Asking Price	\$750,000

DEMOGRAPHICS (5-MILE)

Population	101,753
Households	38,726
Avg. HH Income	\$100,519

OFFERED BY



(843) 856-4600
www.belklucy.com

Kevin Shields
kevin.shields@belklucy.com
(843) 936-1715 — direct office
(843) 593-7119 — mobile