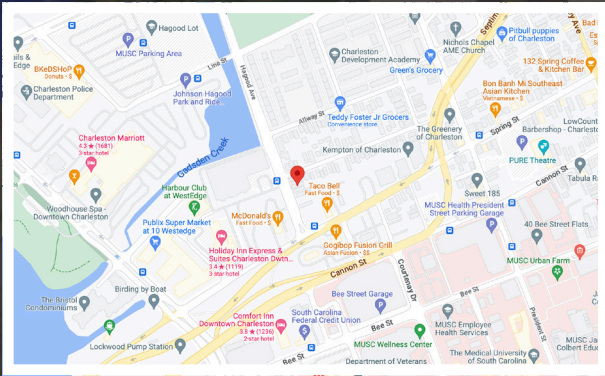
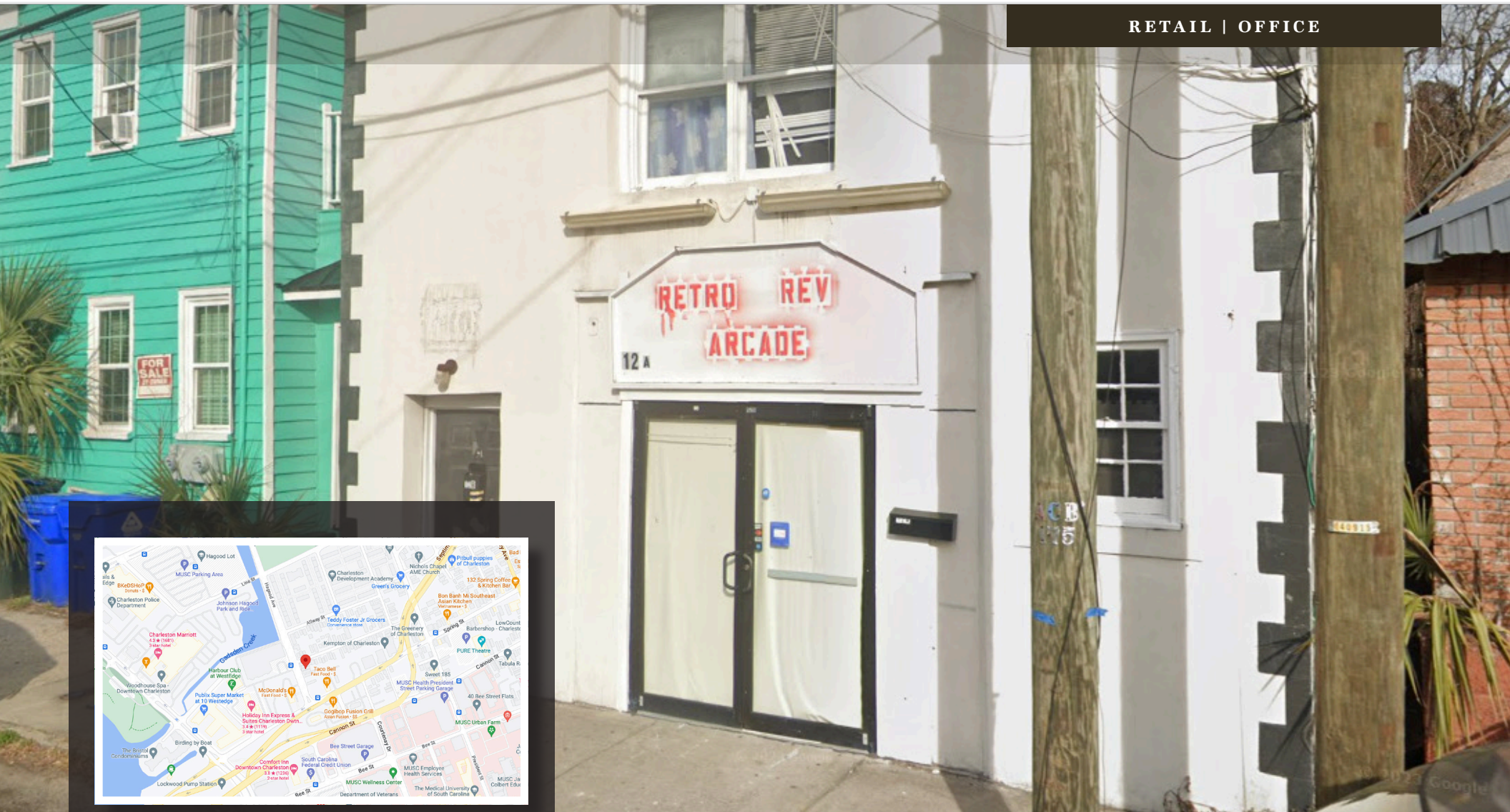


AVAILABLE - FOR LEASE

12 HAGOOD AVENUE, SUITE A CHARLESTON, SC 29403

RETAIL | OFFICE



LOCATION

Nearby retailers



OFFERED BY



(843) 856-4600
www.belklucy.com

Kevin Shields

kevin.shields@belklucy.com

(843) 936-1715 — direct office

(843) 593-7119 — mobile



PROPERTY INFORMATION

PROPERTY DESCRIPTION

Belk | Lucy is pleased to present the exclusive leasing opportunity for 12 Hagood Avenue, Suite A. This retail/office suite is ideally positioned in close proximity to the popular urban multi-use development, WestEdge, and many other amenities. This 1,500 square foot space offers an excellent opportunity for numerous users to enjoy the benefits of bustling peninsular Charleston.

AREA DESCRIPTION

Positioned in Charleston's "Discovery District", 12 Hagood Avenue is nestled amongst numerous amenities including MUSC, Roper St. Francis, WestEdge, and The Citadel and is in close proximity to both Hampton Park and Brittlebank Park. This up-and-coming area is now home to diverse, assorted restaurants and shops, and the area receives business from tourists, students, and residents year round.

TERMS AND CONDITIONS

Size	± 1,500 square feet
Rate	\$20.00/sf NNN

DEMOGRAPHICS (3-MILE)

Population	59,117
Households	27,090
Avg. HH Income	\$111,743

OFFERED BY



(843) 856-4600
www.belklucy.com

Kevin Shields
kevin.shields@belklucy.com
(843) 936-1715 — direct office
(843) 593-7119 — mobile