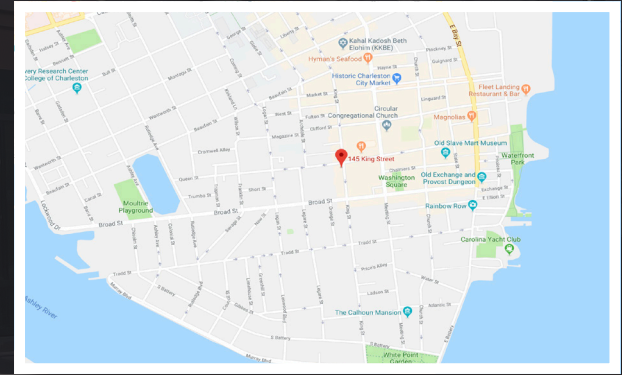
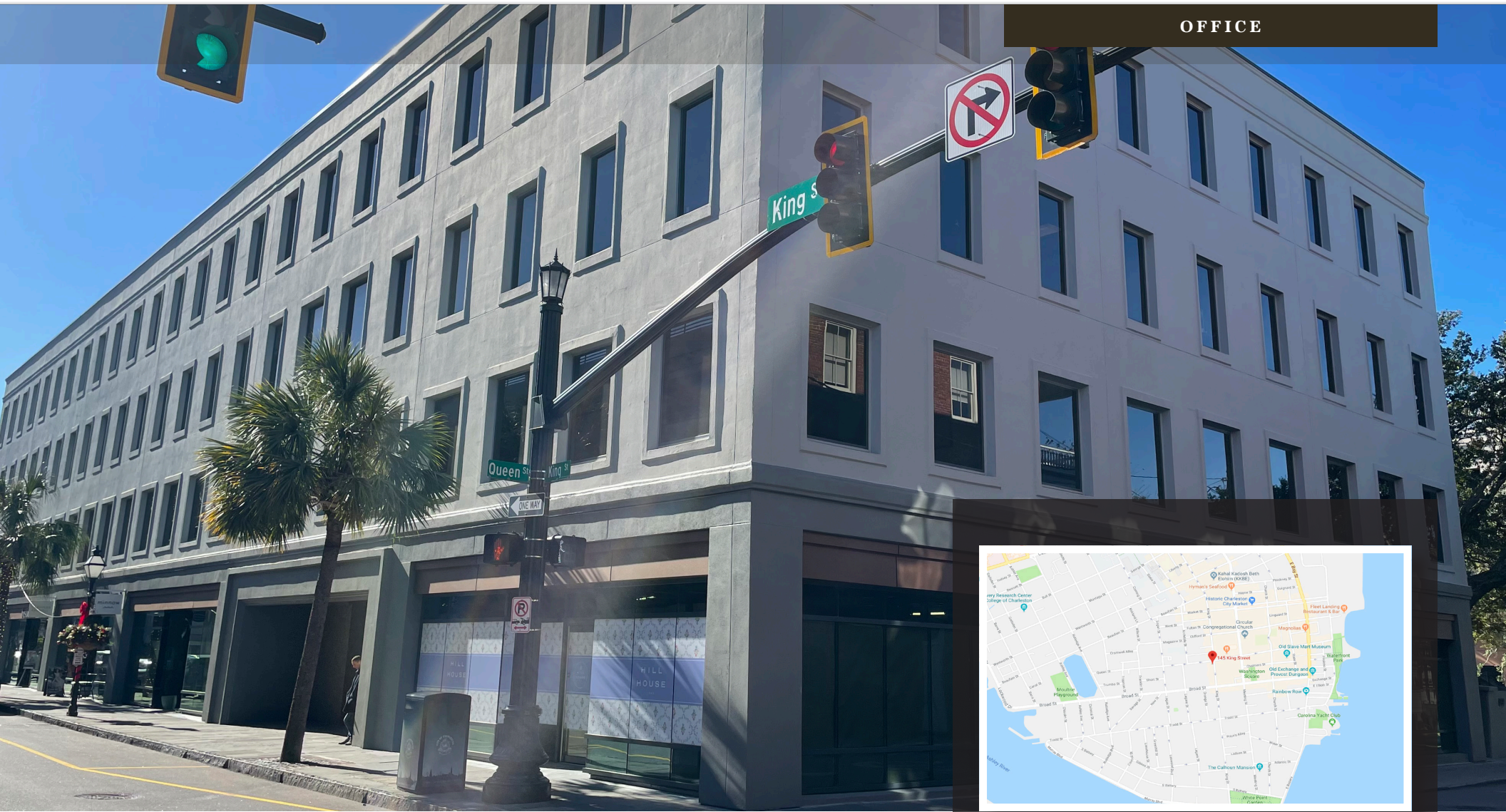


AVAILABLE - FOR LEASE

145 KING STREET

CHARLESTON, SC 29401

OFFICE



Nearby amenities



LOCATION

OFFERED BY



(843) 856-4600  
[www.belklucy.com](http://www.belklucy.com)

Trey Lucy  
 trey.lucy@belklucy.com  
 (843) 606-5455 — direct office  
 (843) 566-2867 — mobile

Kevin Shields  
 kevin.shields@belklucy.com  
 (843) 936-1715 — direct office  
 (843) 593-7119 — mobile

AND

Blair Belk, CCIM  
 blair.belk@belklucy.com  
 (843) 606-5449 — direct office  
 (843) 709-9292 — mobile

## PROPERTY INFORMATION

## PROPERTY DESCRIPTION

Belk | Lucy is pleased to present the exclusive listing for 145 King Street. This landmark building is ideally positioned at the intersection of King Street and Queen Street in the heart of the historic district, this property is in close proximity to numerous dining and shopping destinations. Nearby amenities include Ben Silver, Husk, Brooks Brothers, Millers All Day, City Lights Coffee, and Brown Dog Deli, just to name a few.

## AREA DESCRIPTION

Historic King Street, located in downtown Charleston, SC is the premier retail and restaurant location in peninsular Charleston. Located in the heart of historic Charleston, King Street is home to diverse, assorted restaurants and shops, and the area receives business from tourists, students, and residents year round.



## AVAILABILITIES

Suite 203	2,549 rsf	\$34.00/rsf Full Service
Suite 312	1,212 rsf	\$36.00/rsf Full Service
Suite 407	1,758 rsf	\$34.00/rsf Full Service

## DEMOGRAPHICS (3-MILE)

Daytime Population	153,334
Households	58,236
Avg. HH Income	\$107,699

OFFERED BY



(843) 856-4600  
www.belklucy.com

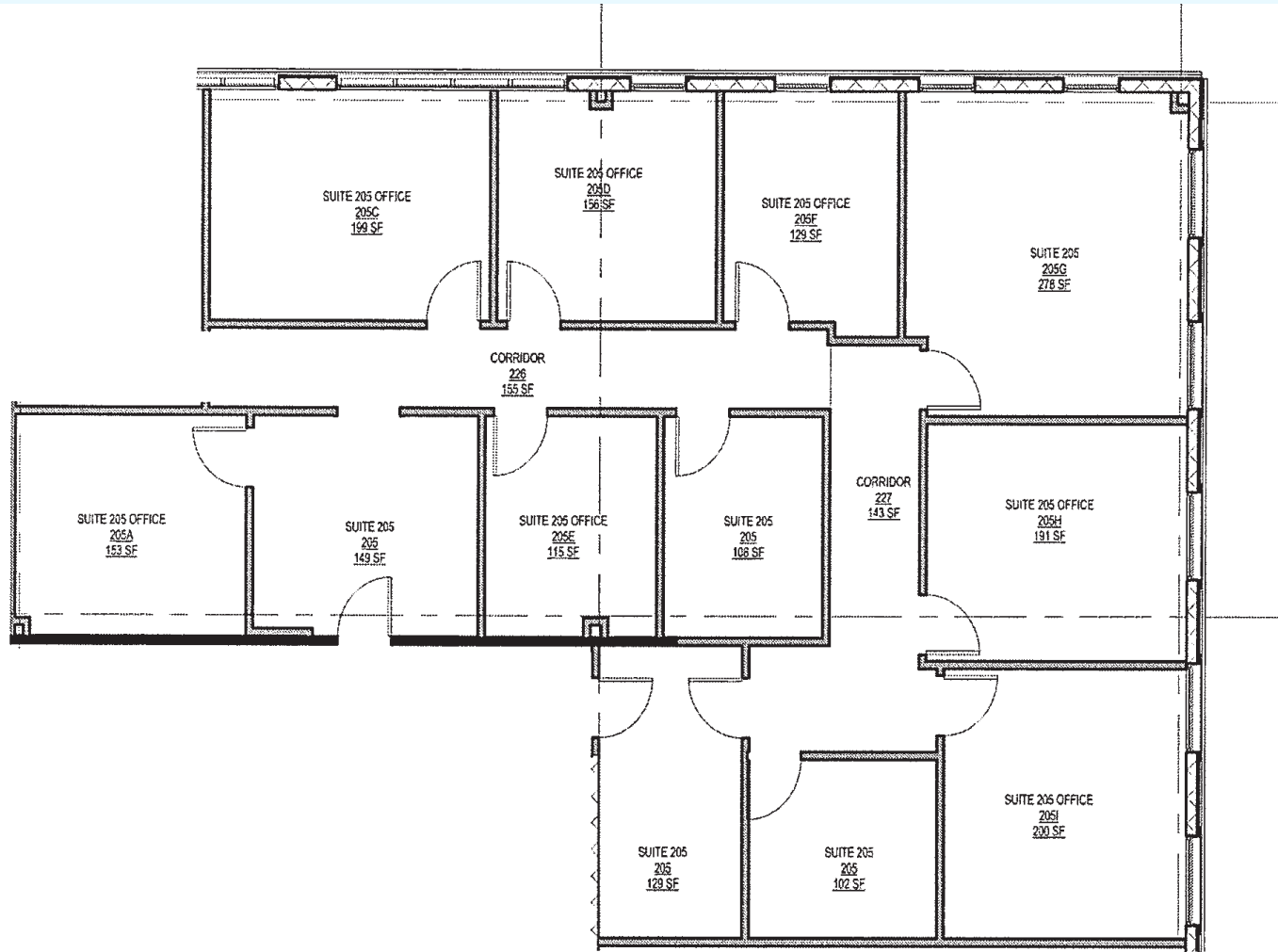
Trey Lucy  
trey.lucy@belklucy.com  
(843) 606-5455 — direct office  
(843) 566-2867 — mobile

Kevin Shields  
kevin.shields@belklucy.com  
(843) 936-1715 — direct office  
(843) 593-7119 — mobile

AND

Blair Belk, CCIM  
blair.belk@belklucy.com  
(843) 606-5449 — direct office  
(843) 709-9292 — mobile

SUITE 203 PLAN



OFFERED BY



(843) 856-4600  
www.belklucy.com

Trey Lucy  
trey.lucy@belklucy.com  
(843) 606-5455 — direct office  
(843) 566-2867 — mobile

Kevin Shields  
kevin.shields@belklucy.com  
(843) 936-1715 — direct office  
(843) 593-7119 — mobile

AND

Blair Belk, CCIM  
blair.belk@belklucy.com  
(843) 606-5449 — direct office  
(843) 709-9292 — mobile

AERIAL



OFFICE SPACE AVAILABLE:  
145 King St

OFFERED BY



(843) 856-4600  
www.belklucy.com

Trey Lucy  
 trey.lucy@belklucy.com  
 (843) 606-5455 — direct office  
 (843) 566-2867 — mobile

Kevin Shields  
 kevin.shields@belklucy.com  
 (843) 936-1715 — direct office  
 (843) 593-7119 — mobile

AND

Blair Belk, CCIM  
 blair.belk@belklucy.com  
 (843) 606-5449 — direct office  
 (843) 709-9292 — mobile