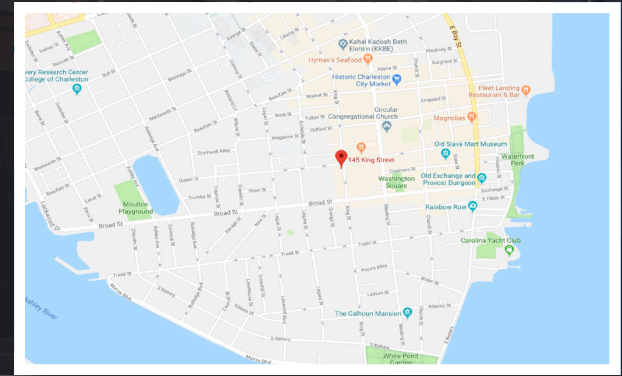
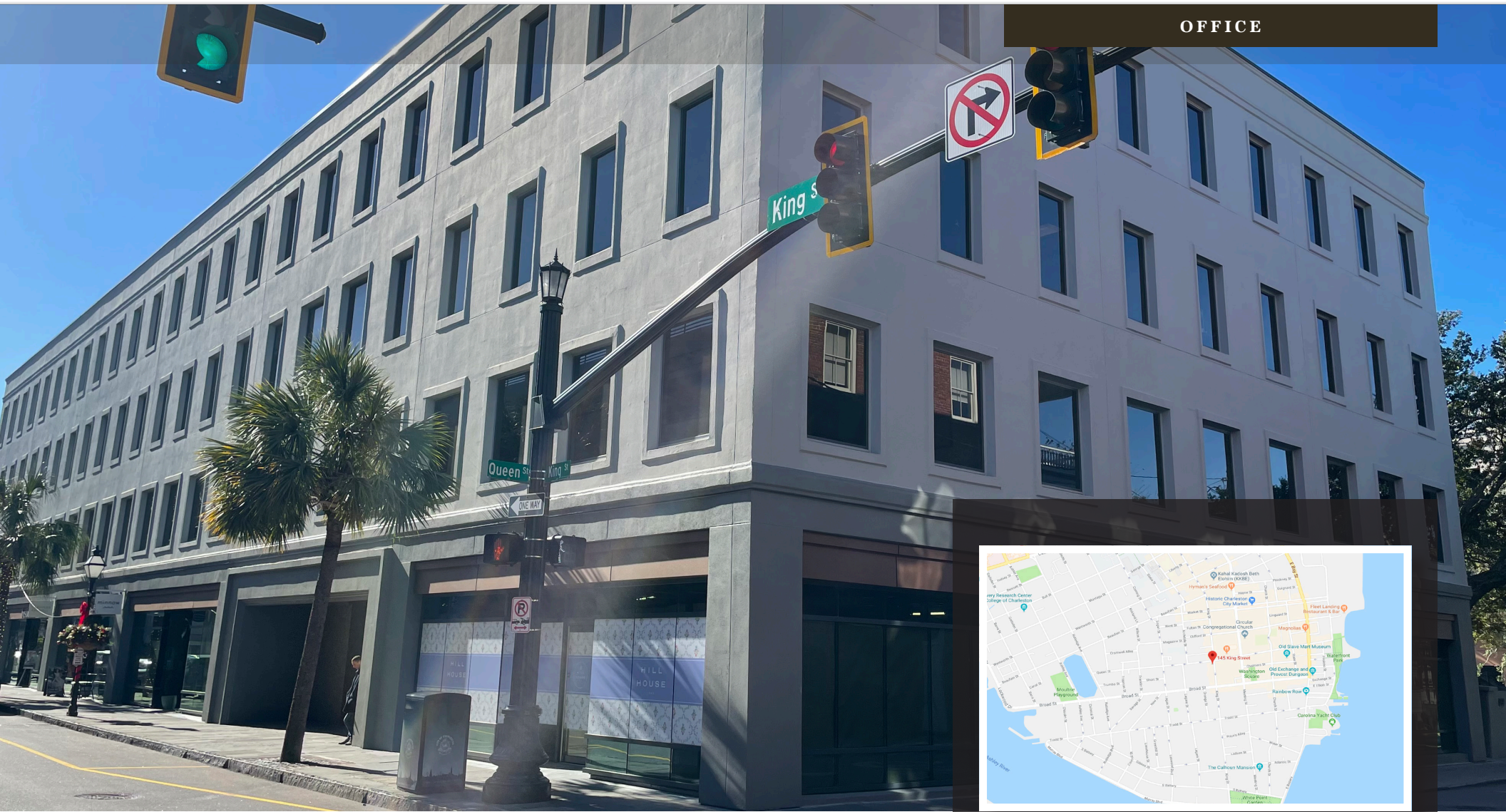


AVAILABLE - FOR LEASE

145 KING STREET

CHARLESTON, SC 29401

OFFICE



Nearby amenities



LOCATION

OFFERED BY



(843) 856-4600  
[www.belklucy.com](http://www.belklucy.com)

Trey Lucy  
 trey.lucy@belklucy.com  
 (843) 606-5455 — direct office  
 (843) 566-2867 — mobile

Kevin Shields  
 kevin.shields@belklucy.com  
 (843) 936-1715 — direct office  
 (843) 593-7119 — mobile

AND

Blair Belk, CCIM  
 blair.belk@belklucy.com  
 (843) 606-5449 — direct office  
 (843) 709-9292 — mobile

## PROPERTY INFORMATION

## PROPERTY DESCRIPTION

Belk | Lucy is pleased to present the exclusive listing for 145 King Street. This landmark building is ideally positioned at the intersection of King Street and Queen Street in the heart of the historic district, this property is in close proximity to numerous dining and shopping destinations. Nearby amenities include Ben Silver, Husk, Brooks Brothers, Millers All Day, City Lights Coffee, and Brown Dog Deli, just to name a few.

## AREA DESCRIPTION

Historic King Street, located in downtown Charleston, SC is the premier retail and restaurant location in peninsular Charleston. Located in the heart of historic Charleston, King Street is home to diverse, assorted restaurants and shops, and the area receives business from tourists, students, and residents year round.



## AVAILABLE OFFICES

Suite 204	1,499 rsf	\$34.00/rsf FS
Suite 225	6,191 rsf	\$34.00/rsf FS
Suite 309*	1,204 rsf	\$36.00/rsf FS
Suite 310*	1,212 rsf	\$36.00/rsf FS
Suite 325*	5,699 rsf	\$34.00/rsf FS
Suite 410	2,962 rsf	\$36.00/rsf FS

\* May be combined. See floor plan.

## DEMOGRAPHICS (3-MILE)

Daytime Population	153,334
Households	58,236
Avg. HH Income	\$107,699

OFFERED BY



(843) 856-4600  
www.belklucy.com

Trey Lucy  
trey.lucy@belklucy.com  
(843) 606-5455 — direct office  
(843) 566-2867 — mobile

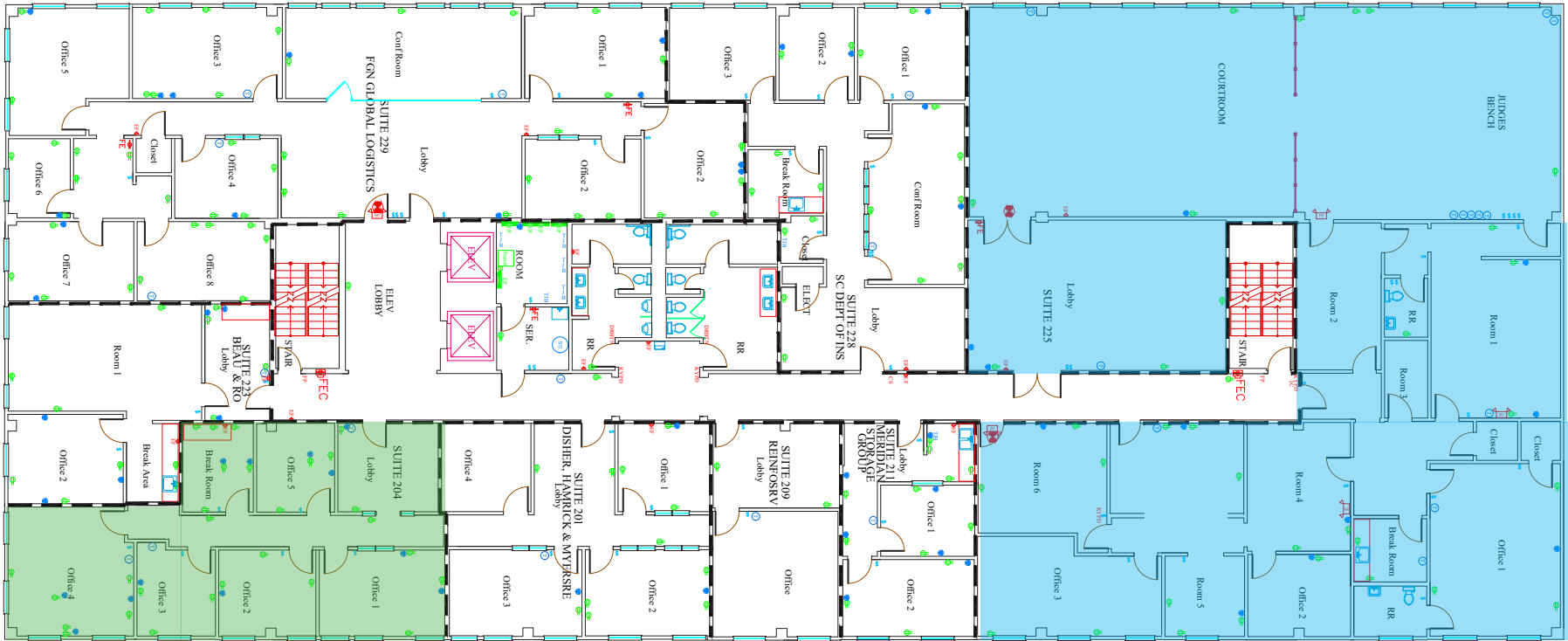
Kevin Shields  
kevin.shields@belklucy.com  
(843) 936-1715 — direct office  
(843) 593-7119 — mobile

AND

Blair Belk, CCIM  
blair.belk@belklucy.com  
(843) 606-5449 — direct office  
(843) 709-9292 — mobile

2ND FLOOR

KING & QUEEN BUILDING 2ND FLOOR



- Suite 204: 1,499 rsf
- Suite 225: 6,191 rsf

2nd FLOOR AVAILABILITIES		
Suite 204	1,499 rsf	\$34.00/rsf FS
Suite 225	6,191 rsf	\$34.00/rsf FS

OFFERED BY



(843) 856-4600  
www.belklucy.com

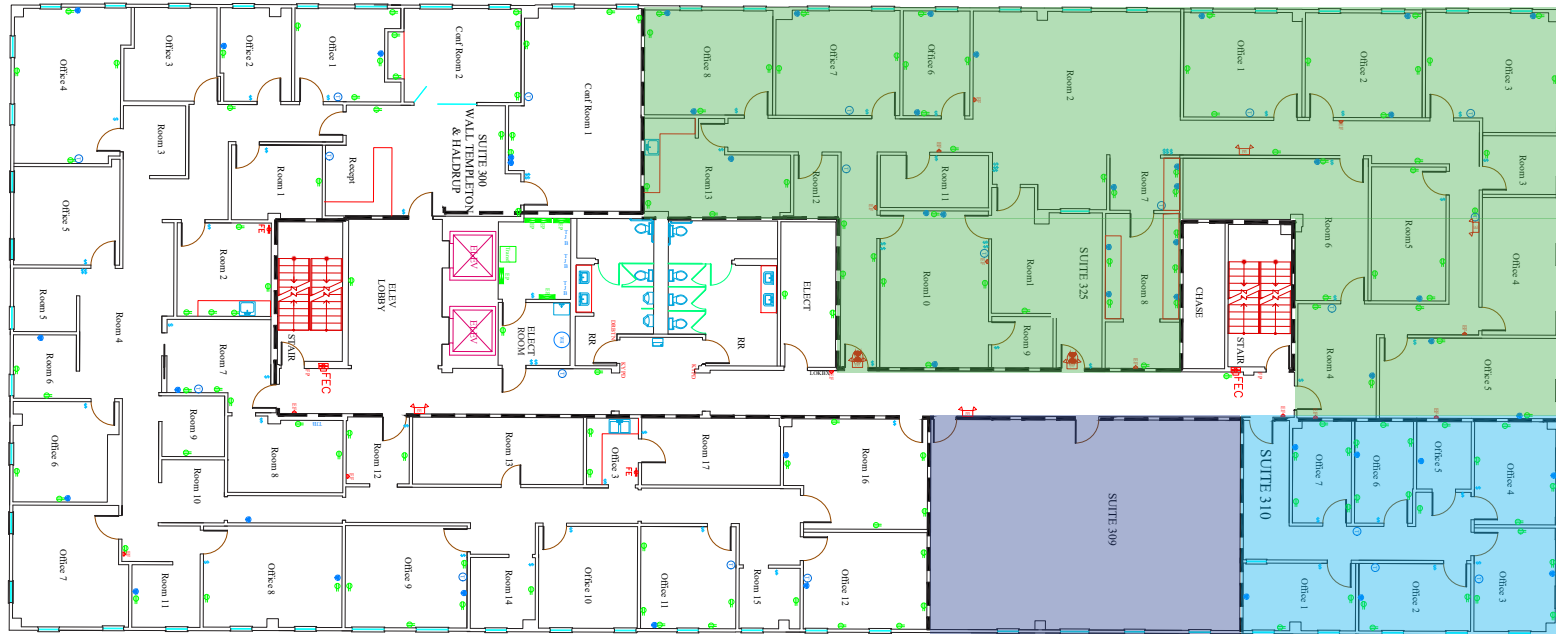
Trey Lucy  
trey.lucy@belklucy.com  
(843) 606-5455 — direct office  
(843) 566-2867 — mobile

Kevin Shields  
kevin.shields@belklucy.com  
(843) 936-1715 — direct office  
(843) 593-7119 — mobile

AND

Blair Belk, CCIM  
blair.belk@belklucy.com  
(843) 606-5449 — direct office  
(843) 709-9292 — mobile

KING & QUEEN BUILDING 3RD FLOOR



- Suite 309: 1,202 rsf
- Suite 310: 1,212 rsf
- Suite 325: 5,699 rsf

3rd FLOOR AVAILABILITIES		
Suite 309	1,204 rsf	\$36.00/rsf FS
Suite 310	1,212 rsf	\$36.00/rsf FS
Suites 309/310	2,416 rsf	\$36.00/rsf FS
Suite 325	5,699 rsf	\$34.00/rsf FS
Suites 325/310	6,911 rsf	\$34.00/rsf FS
Suite 325/310/309	8,115 rsf	\$34.00/rsf FS

OFFERED BY



(843) 856-4600  
www.belklucy.com

Trey Lucy  
trey.lucy@belklucy.com  
(843) 606-5455 — direct office  
(843) 566-2867 — mobile

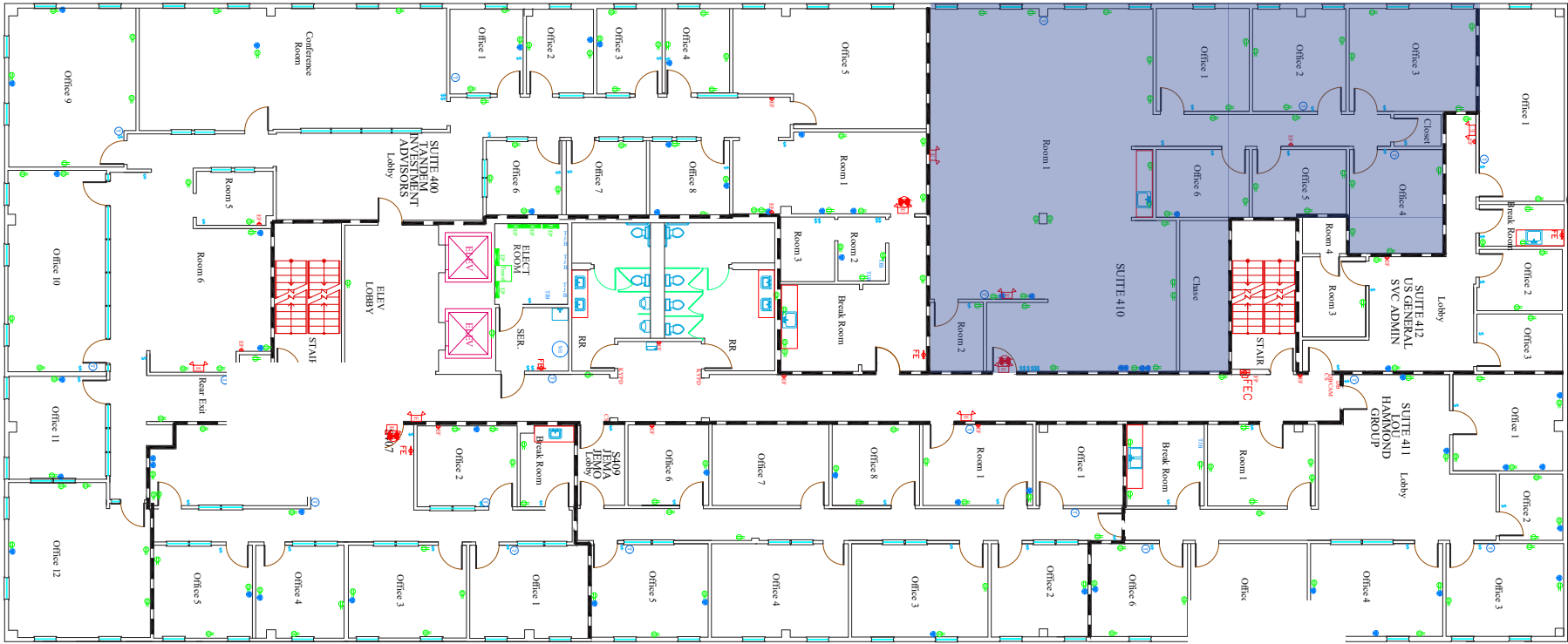
Kevin Shields  
kevin.shields@belklucy.com  
(843) 936-1715 — direct office  
(843) 593-7119 — mobile

AND

Blair Belk, CCIM  
blair.belk@belklucy.com  
(843) 606-5449 — direct office  
(843) 709-9292 — mobile

4TH FLOOR

KING & QUEEN BUILDING 4TH FLOOR



Suite 410: 2,962 rsf

4th FLOOR AVAILABILITIES		
Suite 410	2,962 rsf	\$36.00/rsf FS

OFFERED BY



(843) 856-4600  
www.belklucy.com

Trey Lucy  
trey.lucy@belklucy.com  
(843) 606-5455 — direct office  
(843) 566-2867 — mobile

Kevin Shields  
kevin.shields@belklucy.com  
(843) 936-1715 — direct office  
(843) 593-7119 — mobile

AND

Blair Belk, CCIM  
blair.belk@belklucy.com  
(843) 606-5449 — direct office  
(843) 709-9292 — mobile

