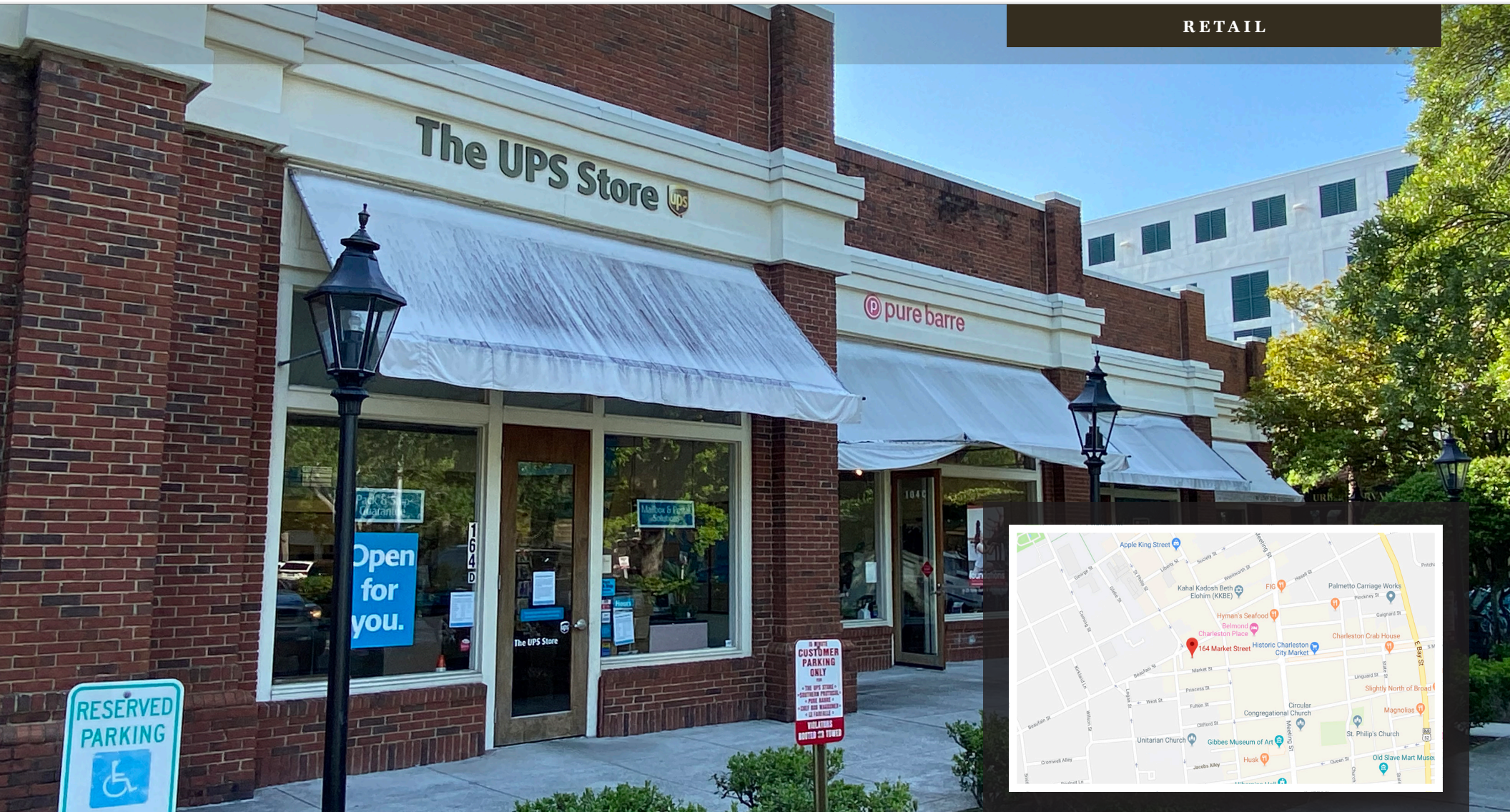


AVAILABLE - FOR LEASE

164-D MARKET STREET

CHARLESTON, SC 29401

RETAIL



Nearby Retailers



LOCATION

OFFERED BY



(843) 856-4600  
[www.belklucy.com](http://www.belklucy.com)

Trey Lucy  
 trey.lucy@belklucy.com  
 (843) 606-5455 — direct office  
 (843) 566-2867 — mobile



## PROPERTY INFORMATION

## PROPERTY DESCRIPTION

Belk | Lucy is pleased to present the exclusive listing for 164 Market Street, Suite D. This property is ideally located in Charleston's premier tourist district. The attractive brick facade retail center boasts free parking and an impressive mix of quality tenants, including La Farfalle, Pure Barre, Jessamine + Vine, and In the Kitchen with Bob Waggoner. Situated between two parking decks and complimentary drive-up parking available, this 995 sf space would be well suited for a range of retail uses. This is an excellent opportunity to join other successful area retailers, including Anthropologie, Brooks Brothers, Louis Vuitton, Lululemon and Target, just to name a few.

## AREA DESCRIPTION

Market Street is home to one of the city's most iconic landmarks, the Charleston City Market, which attracts thousands of tourists each year. Historic King Street is world renowned as one of the top shopping experiences. This area continues to grow in popularity with the openings of luxury boutique hotels and is widely regarded as Charleston's preeminent restaurant and retail destinations. Situated in close proximity to the Battery, Waterfront Park, and the Aquarium, this area receives year-round patronage from tourists, students, and residents.



## TERMS AND CONDITIONS

Suite D	± 995 sf	\$50.00/sf NNN
CAM, taxes, and ins. (est.)		\$8.25/sf

## DEMOGRAPHICS (5-MILE)

Daytime Population	165,966
Households	57,353
Avg. HH Income	\$136,268

OFFERED BY



(843) 856-4600  
www.belklucy.com

Trey Lucy  
trey.lucy@belklucy.com  
(843) 606-5455 — direct office  
(843) 566-2867 — mobile



AERIAL



OFFERED BY



(843) 856-4600  
 www.belklucy.com

Trey Lucy  
 trey.lucy@belklucy.com  
 (843) 606-5455 — direct office  
 (843) 566-2867 — mobile