

AVAILABLE - FOR LEASE

241-A WILLBROOK BLVD. PAWLEYS ISLAND, SC 29585

EXECUTIVE OFFICE SUITES



Nearby amenities



Edward Jones



LOCATION

OFFERED BY



(843) 856-4600
www.belklucy.com

Morrow Boggs
morrow.boggs@belklucy.com
(843) 606-5460 — direct office
(843) 998-5234 — mobile

AND

Trey Lucy
trey.lucy@belklucy.com
(843) 606-5455 — direct office
(843) 566-2867 — mobile

PROPERTY INFORMATION

PROPERTY DESCRIPTION

Belk | Lucy is pleased to present the exclusive listing for 241-A Willbrook Boulevard. Positioned off Ocean Highway (Hwy 17) in Pawleys Island, this picturesque office condo offers a convenient location in close proximity to numerous amenities. First floor executive suites are available with access to shared restrooms, kitchen and conference room.

AREA DESCRIPTION

Located on the southern end of the Grand Strand, which stretches from Georgetown to Little River, Pawleys Island is a picturesque coastal community with rich history and natural beauty. Known as one of the oldest summer resorts on the East Coast, this charming seaside escape still boasts miles of unspoiled beaches as well as nationally recognized golf courses, top-notch shopping, and excellent cuisine. Pawleys Island Community boasts an affluent year-round population and approximately 14 million visitors in the immediate surrounding trade area including DeBordieu, Litchfield, and Murrells Inlet.



TERMS AND CONDITIONS

Suite C	+/- 200 sf	\$800/mo FS
Suite E	+/- 150 sf	\$700/mo FS
Suite F	+/- 200 sf	\$800/mo FS

DEMOGRAPHICS (5-MILE)

Population	16,222
Households	7,790
Avg. HH Income	\$120,195

OFFERED BY



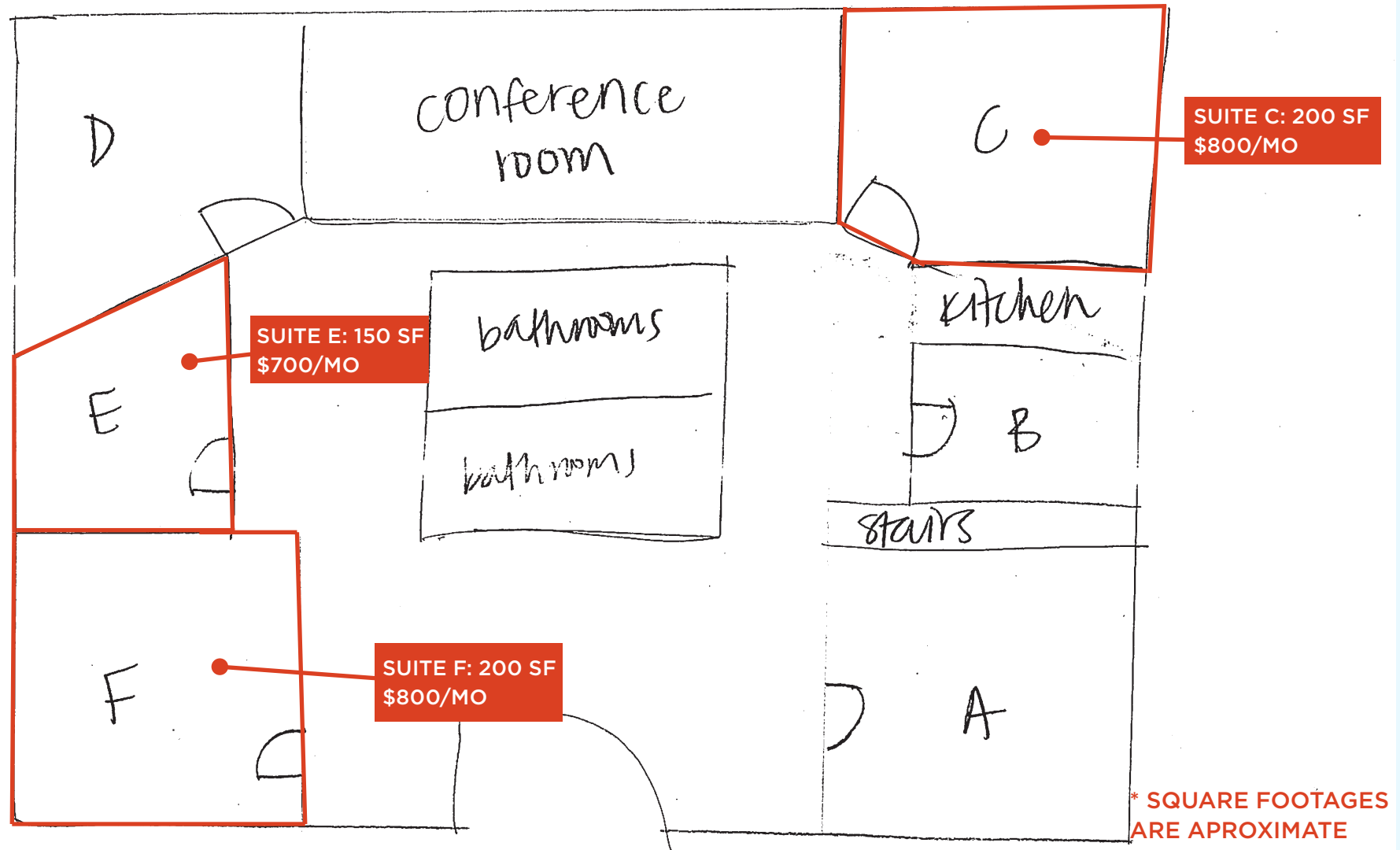
(843) 856-4600
www.belklucy.com

Morrow Boggs
morrow.boggs@belklucy.com
(843) 606-5460 — direct office
(843) 998-5234 — mobile

AND

Trey Lucy
trey.lucy@belklucy.com
(843) 606-5455 — direct office
(843) 566-2867 — mobile

SITE PLAN



OFFERED BY



(843) 856-4600
www.belklucy.com

Morrow Boggs
morrow.boggs@belklucy.com
(843) 606-5460 — direct office
(843) 998-5234 — mobile

AND

Trey Lucy
trey.lucy@belklucy.com
(843) 606-5455 — direct office
(843) 566-2867 — mobile