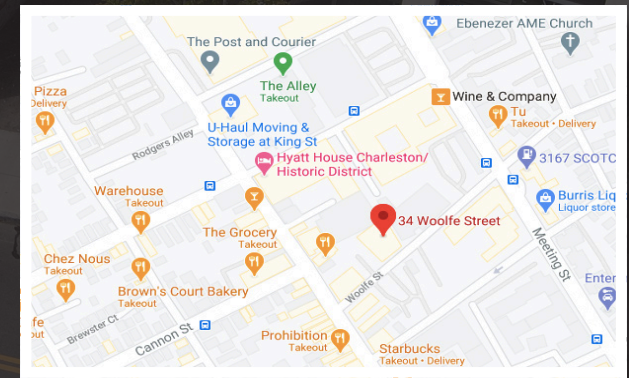
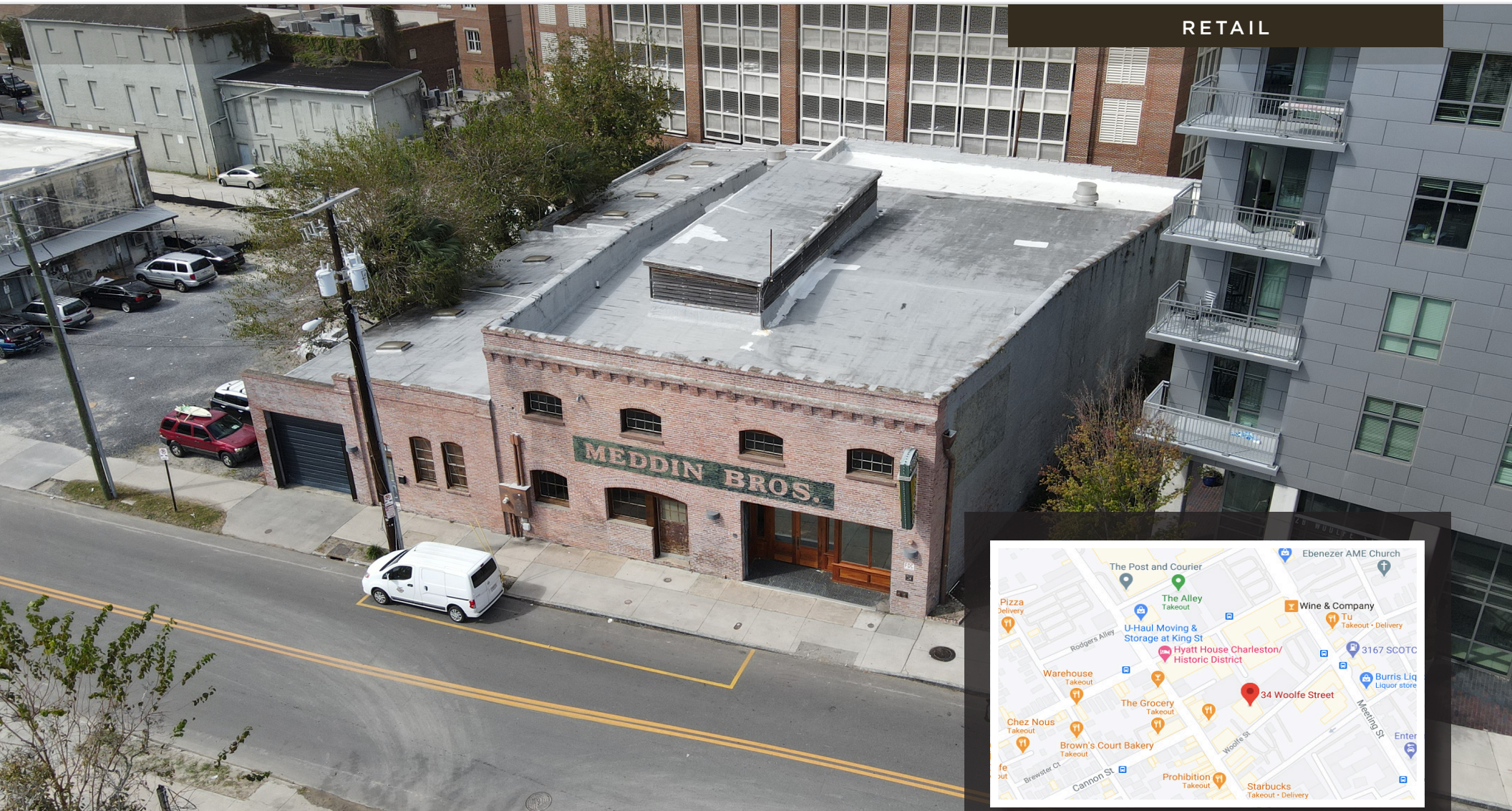


AVAILABLE - FOR LEASE

32 - 34 WOOLFE STREET CHARLESTON, SC 29403

RETAIL



Nearby retailers include



west elm



LOCATION

OFFERED BY



(843) 856-4600
www.belklucy.com

Trey Lucy
 trey.lucy@belklucy.com
 (843) 606-5455 — direct office
 (843) 566-2867 — mobile

AND

Blair Belk, CCIM
 blair.belk@belklucy.com
 (843) 606-5449 — direct office
 (843) 709-9292 — mobile



PROPERTY INFORMATION

Belk | Lucy is pleased to present the exclusive listing for 32-34 Woolfe Street. Ideally positioned in Charleston’s burgeoning Upper Peninsula district, this handsome property sits between upper King Street and Meeting Street surrounded by some of the city’s finest new restaurants and retailers. Additionally, the property is adjacent to the upcoming Lowcountry Lowline project, a two-mile park situated along an abandoned historic railroad that stretches from Marion Square to Mt. Pleasant Street. Well-constructed circa 1914, this former warehouse has been beautifully restored in recent years and was home to Woolfe Street Playhouse. The first floor measures approximately 13,000sf along with an additional 2,000sf mezzanine. With an open layout and plenty of historic character, 32-34 Woolfe Street would be an ideal setting for a variety of uses. Parking is available across the street.

TERMS AND CONDITIONS

Size	± 15,000 sf
Asking Rate	\$ 30.00/sf Net
Taxes and Insurance	\$ TBD

DEMOGRAPHICS (3-MILE)

Daytime Population	153,334
Households	21,320
Avg. HH Income	\$103,577

OFFERED BY



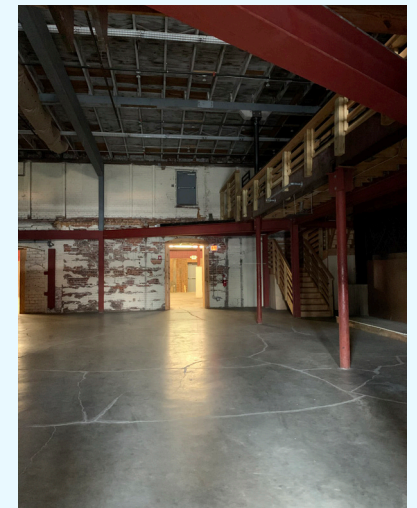
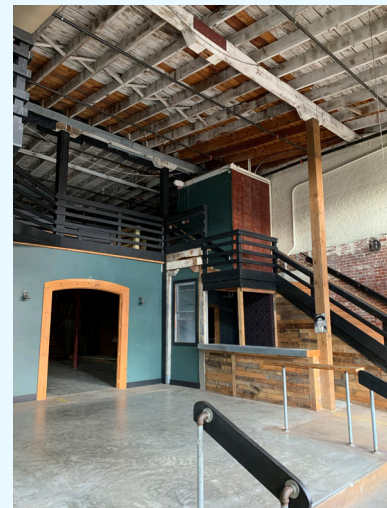
(843) 856-4600
www.belklucy.com

Trey Lucy
trey.lucy@belklucy.com
(843) 606-5455 — direct office
(843) 566-2867 — mobile

AND

Blair Belk, CCIM
blair.belk@belklucy.com
(843) 606-5449 — direct office
(843) 709-9292 — mobile

PHOTOS



OFFERED BY



(843) 856-4600
www.belklucy.com

Trey Lucy
trey.lucy@belklucy.com
(843) 606-5455 — direct office
(843) 566-2867 — mobile

AND

Blair Belk, CCIM
blair.belk@belklucy.com
(843) 606-5449 — direct office
(843) 709-9292 — mobile

SITE PLAN



OFFERED BY



(843) 856-4600
www.belklucy.com

Trey Lucy
trey.lucy@belklucy.com
(843) 606-5455 — direct office
(843) 566-2867 — mobile

AND

Blair Belk, CCIM
blair.belk@belklucy.com
(843) 606-5449 — direct office
(843) 709-9292 — mobile

