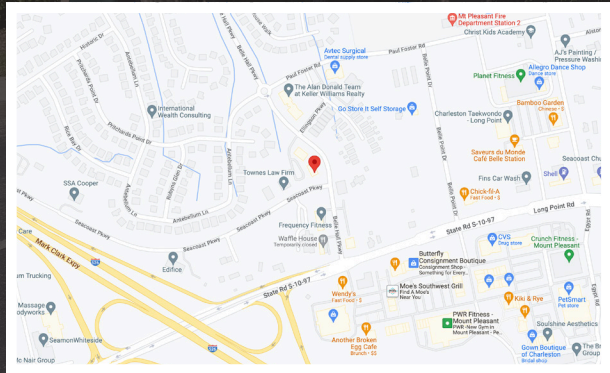


AVAILABLE - FOR SALE

505 BELLE HALL PARKWAY, SUITE 101

MT. PLEASANT, SC 29464

OFFICE



LOCATION

Nearby Amenities



OFFERED BY



(843) 856-4600
www.belklucy.com

Trey Lucy
 trey.lucy@belklucy.com
 (843) 606-5455 — direct office
 (843) 566-2867 — mobile

AND

Kevin Shields
 kevin.shields@belklucy.com
 (843) 936-1715 — direct office
 (843) 593-7119 — mobile

PROPERTY INFORMATION

PROPERTY DESCRIPTION

Belk | Lucy is pleased to present the exclusive listing for 505 Belle Hall Parkway, Suite 101. This 2,000 square foot (1,611 usable square foot) first floor office suite is located in the Belle Hall Executive Office complex conveniently positioned just off of Long Point Road near I-526. This move-in ready suite has an open concept floor plan, access to the outdoor patio area and plenty of parking. Numerous shopping and dining options are available in the immediate vicinity.

AREA DESCRIPTION

The Town of Mount Pleasant is an affluent South Carolina coastal community which is part of the 850,000-person Charleston, SC Metropolitan Statistical Area. Designated an "All-American City" in 2018, the town is South Carolina's fourth largest municipality. A leader in growth, this flourishing community was recently ranked number one fastest-growing city in the state and number two fastest-growing city in the country. Known for its high quality of life, people flock to this charming suburban town for its proximity to area beaches, outdoor activities, shopping and dining amenities, and laidback atmosphere. Additionally, this dynamic community has proven to be an outstanding location for business, offering a highly desirable lifestyle to attract and retain key employees, while providing an available "highly skilled" regional workforce.



TERMS AND CONDITIONS

Size	2,000 sf
Price	\$725,000

DEMOGRAPHICS (5-MILE)

Population	91,657
Households	40,285
Avg. HH Income	\$182,470

OFFERED BY



(843) 856-4600
www.belklucy.com

Trey Lucy
trey.lucy@belklucy.com
(843) 606-5455 — direct office
(843) 566-2867 — mobile

AND

Kevin Shields
kevin.shields@belklucy.com
(843) 936-1715 — direct office
(843) 593-7119 — mobile

INTERIOR PHOTOS



OFFERED BY



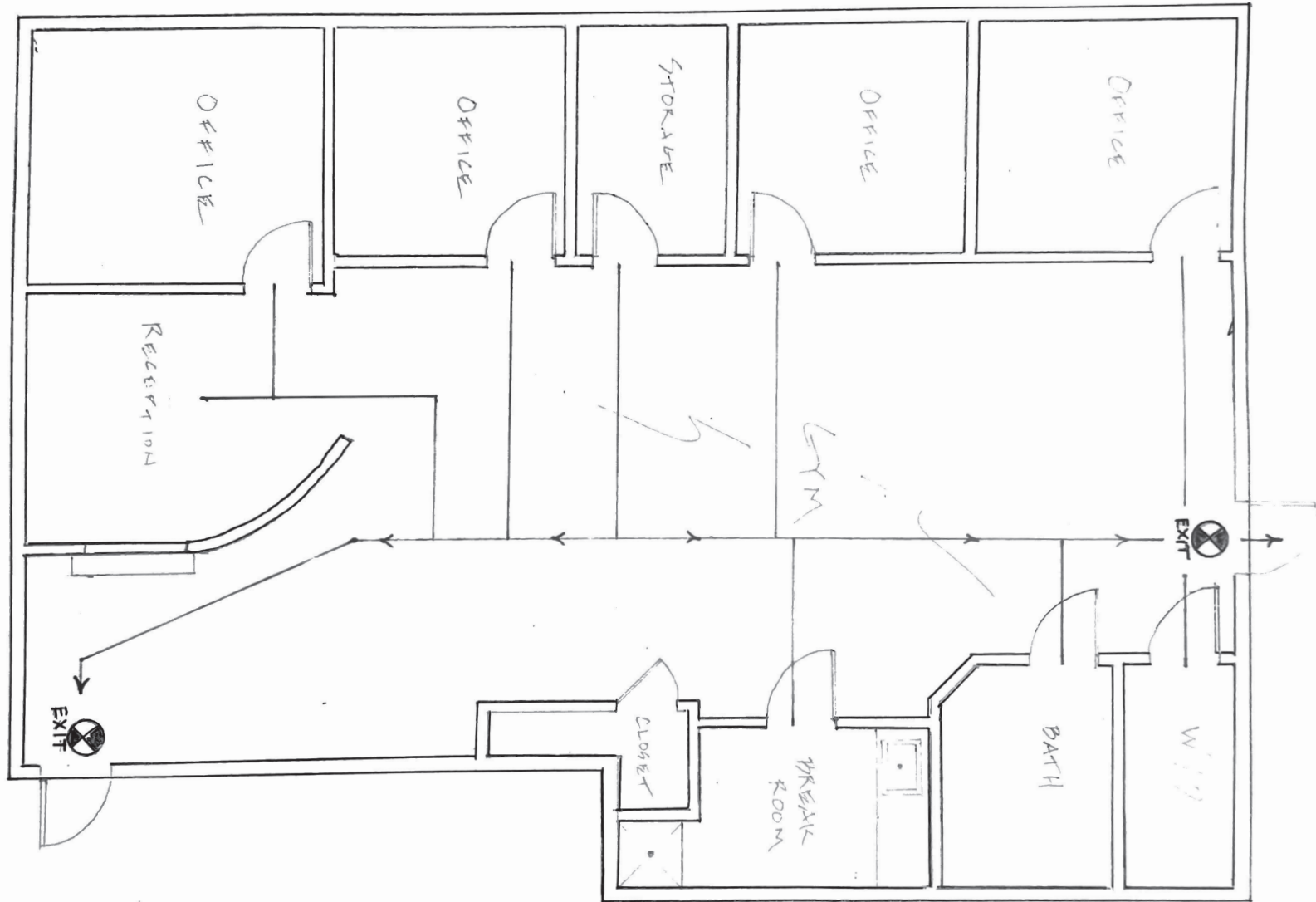
(843) 856-4600
www.belklucy.com

Trey Lucy
trey.lucy@belklucy.com
(843) 606-5455 — direct office
(843) 566-2867 — mobile

AND

Kevin Shields
kevin.shields@belklucy.com
(843) 936-1715 — direct office
(843) 593-7119 — mobile

FLOOR PLAN



OFFERED BY



(843) 856-4600
www.belklucy.com

Trey Lucy
trey.lucy@belklucy.com
(843) 606-5455 — direct office
(843) 566-2867 — mobile

AND

Kevin Shields
kevin.shields@belklucy.com
(843) 936-1715 — direct office
(843) 593-7119 — mobile