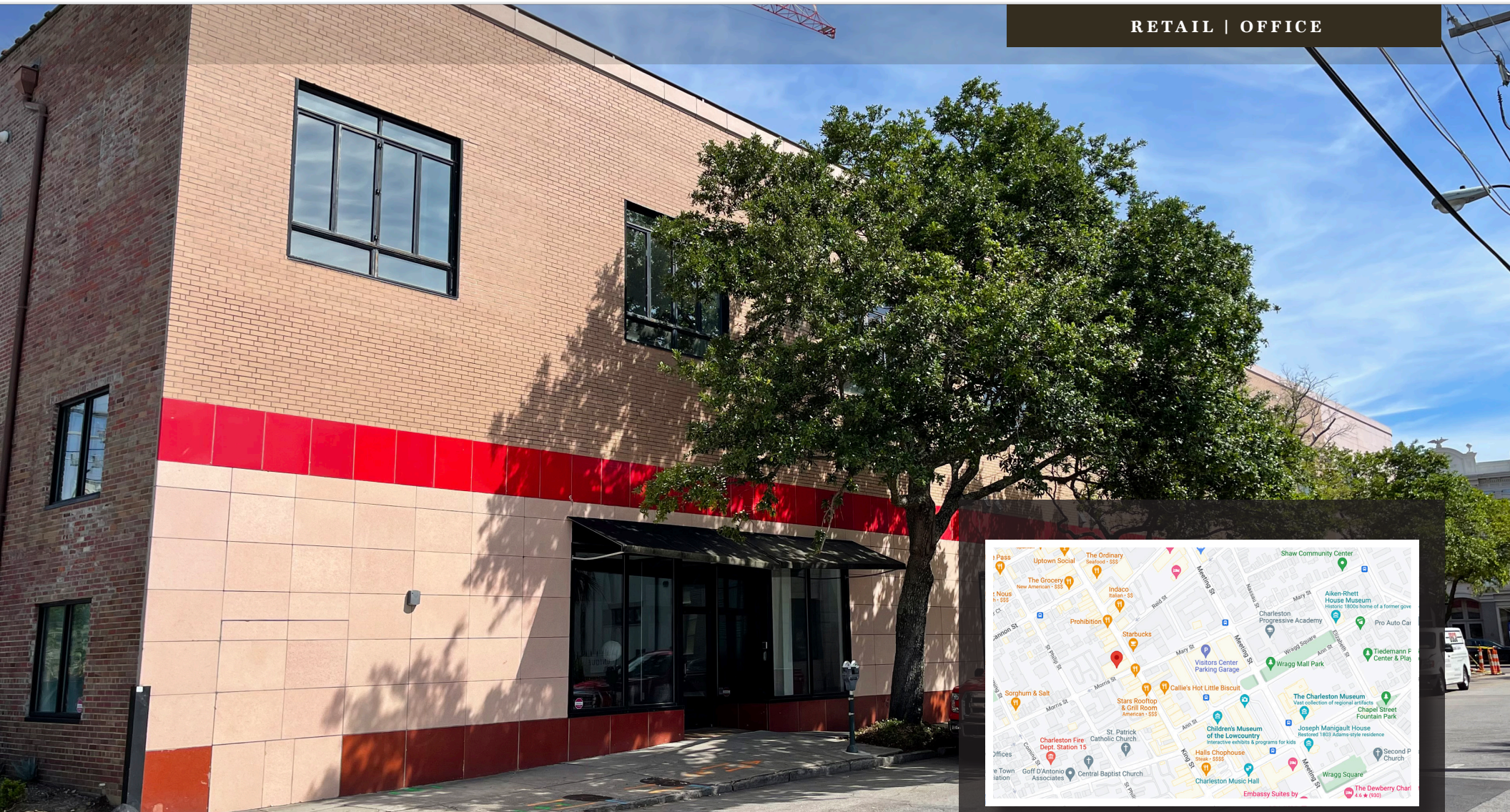


AVAILABLE - FOR LEASE 517 KING STREET, SUITE 4

CHARLESTON, SC 29403

RETAIL | OFFICE



Nearby retailers



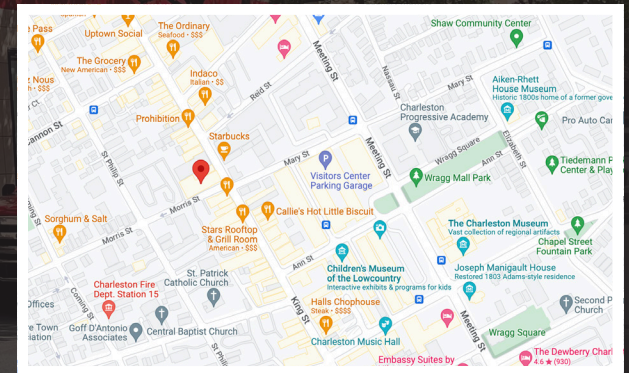
freepople



ORVIS



west elm



LOCATION

OFFERED BY



(843) 856-4600
www.belklucy.com

Trey Lucy
trey.lucy@belklucy.com
(843) 606-5455 — direct office
(843) 566-2867 — mobile

AND

Blair Belk, CCIM
blair.belk@belklucy.com
(843) 606-5449 — direct office
(843) 709-9292 — mobile

PROPERTY INFORMATION

PROPERTY DESCRIPTION

Belk | Lucy is pleased to present the exclusive leasing opportunity for 517 King Street, which is ideally located in the burgeoning Upper King district. Nestled amongst numerous shopping, dining, and other amenities, this is an excellent opportunity to take full advantage of everything downtown Charleston has to offer. This two-story retail/office suite consists of 2,743sf on the main floor and 1,591sf on the second floor. With an open concept floor plan and modern finishes throughout, this space is move-in ready. Two parking spaces are included.

AREA DESCRIPTION

517 King Street is positioned in the Upper King District, also known as the Design District, which is widely regarded as one of the city's freshest neighborhoods. This recently revitalized historic area of Midtown is home to some of Charleston's finest restaurants, boutiques, art galleries, and nightlife. Historic King Street, located in downtown Charleston, SC is the premier retail and restaurant location in peninsular Charleston. Located in the heart of historic Charleston, King Street is home to diverse, assorted restaurants and shops, and the area receives business from tourists, students, and residents year round.



TERMS AND CONDITIONS

Size	4,334 sf
Rate	\$ 38.00/sf NNN
CAM, Taxes, and Ins. (est.)	\$ 6.56/sf

DEMOGRAPHICS (3-MILE)

Daytime Population	153,334
Households	58,236
Avg. HH Income	\$ 107,699

OFFERED BY



(843) 856-4600
www.belklucy.com

Trey Lucy

trey.lucy@belklucy.com

(843) 606-5455 — direct office

(843) 566-2867 — mobile

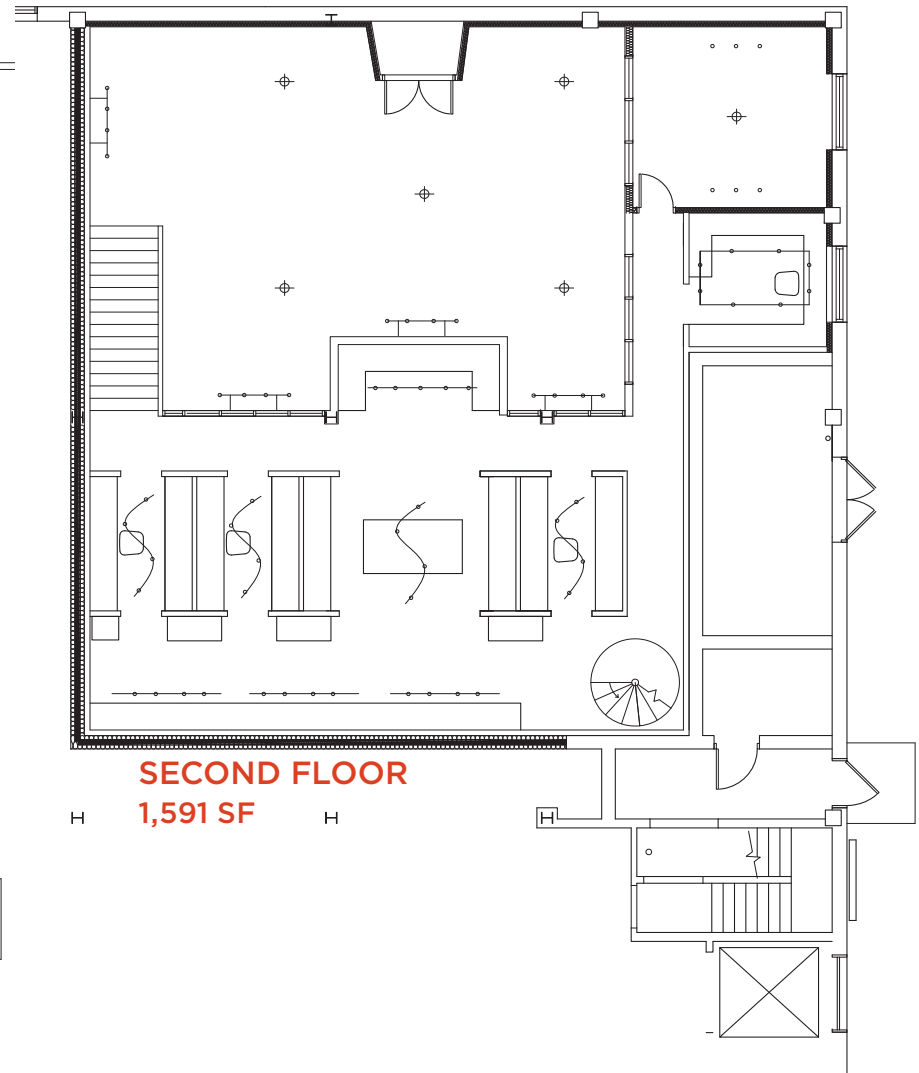
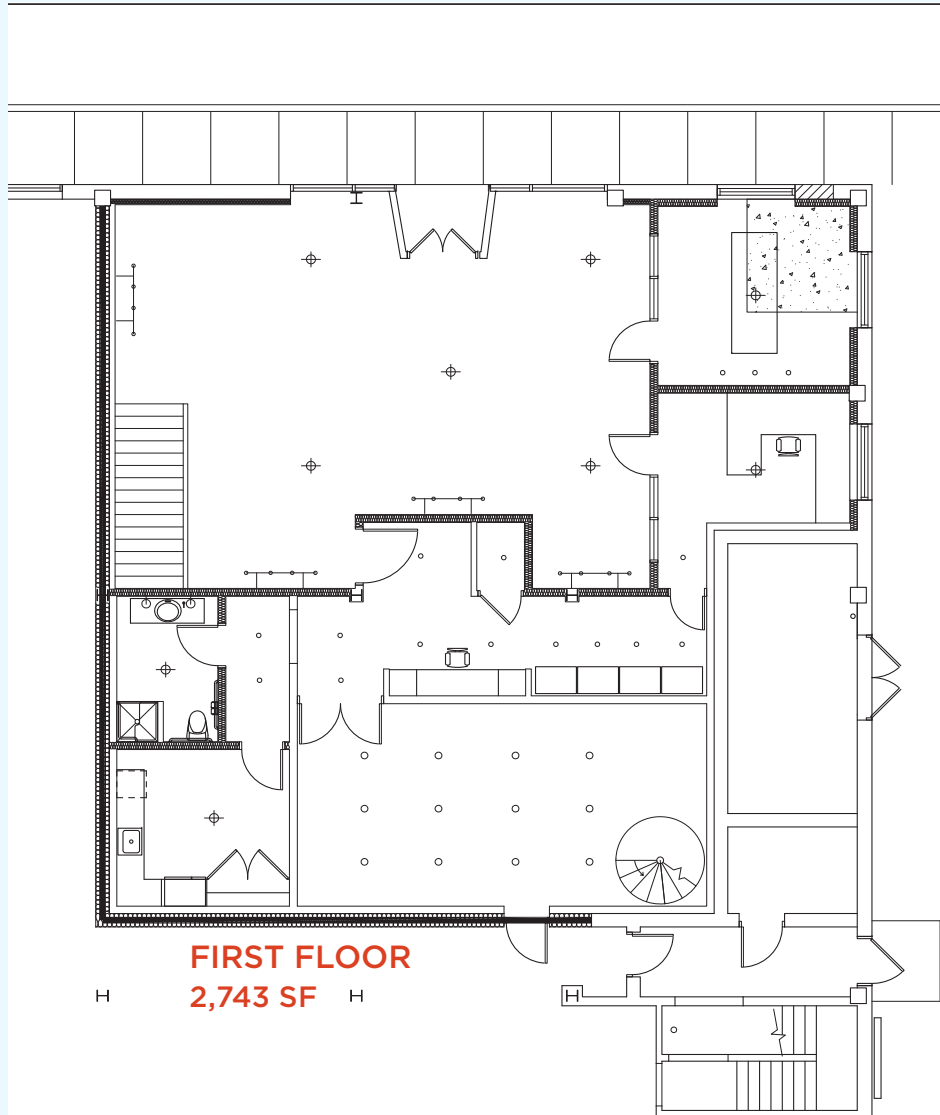
Blair Belk, CCIM

blair.belk@belklucy.com

(843) 606-5449 — direct office

(843) 709-9292 — mobile

FLOOR PLANS



OFFERED BY



(843) 856-4600
www.belklucy.com

Trey Lucy
trey.lucy@belklucy.com
(843) 606-5455 — direct office
(843) 566-2867 — mobile

AND

Blair Belk, CCIM
blair.belk@belklucy.com
(843) 606-5449 — direct office
(843) 709-9292 — mobile