

AVAILABLE - FOR LEASE

57 HASSELL STREET CHARLESTON, SC 29401

OFFICE



Nearby amenities



LOCATION

OFFERED BY



(843) 856-4600
www.belklucy.com

Blair Belk, CCIM
blair.belk@belklucy.com
(843) 606-5449 — direct office
(843) 709-9292 — mobile

AND

Trey Lucy
trey.lucy@belklucy.com
(843) 606-5455 — direct office
(843) 566-2867 — mobile

PROPERTY INFORMATION

PROPERTY DESCRIPTION

Belk | Lucy is pleased to present the exclusive listing for 57 Hasell Street. Ideally positioned in the heart of downtown Charleston, this single story office building is within walking distance to numerous dining and shopping amenities. Comprised of several private offices, central open work area and breakroom, this property has a highly functional layout. Up to 6,740 square feet is available. Surface parking spaces are included with the property, a rarity for the peninsula.

AREA DESCRIPTION

Located in close proximity to the Cooper River on the lower peninsula, the prestigious Ansonborough area is one of Charleston's most desirable neighborhoods. Situated in close proximity to bustling lower King Street, Market Street, and the Aquarium, this area receives year-round patronage from tourists, students, and residents.



ON-SITE PARKING AVAILABLE

TERMS AND CONDITIONS

Size	6,740 sf
Price	\$19.50/sf NNN
CAM, taxes, and ins. (est.)	\$TBD/sf

DEMOGRAPHICS (5-MILE)

Daytime Population	153,334
Households	57,073
Avg. HH Income	\$137,651

OFFERED BY



(843) 856-4600
www.belklucy.com

Blair Belk, CCIM
blair.belk@belklucy.com
(843) 606-5449 — direct office
(843) 709-9292 — mobile

AND

Trey Lucy
trey.lucy@belklucy.com
(843) 606-5455 — direct office
(843) 566-2867 — mobile

AVAILABLE - FOR LEASE

57 HASSELL STREET CHARLESTON, SC 29401

ADDITIONAL PHOTOS



OFFERED BY



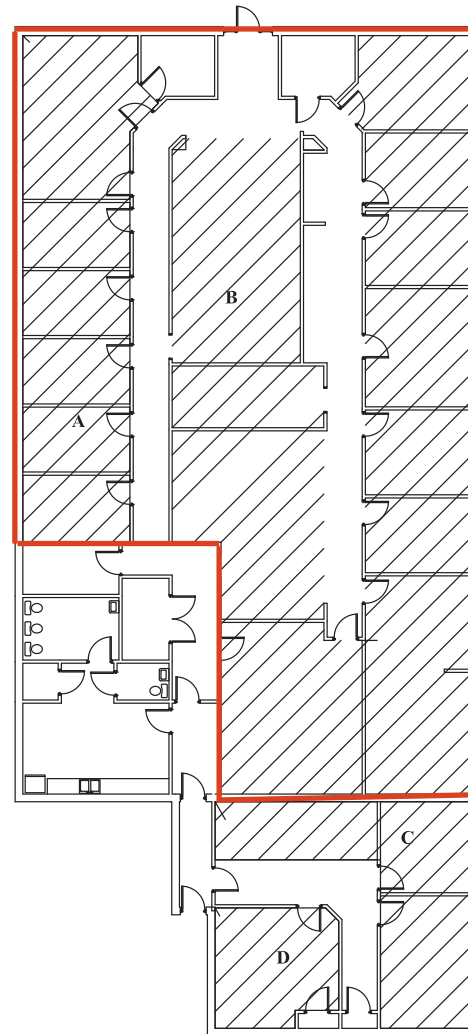
(843) 856-4600
www.belklucy.com

Blair Belk, CCIM
blair.belk@belklucy.com
(843) 606-5449 — direct office
(843) 709-9292 — mobile

AND

Trey Lucy
trey.lucy@belklucy.com
(843) 606-5455 — direct office
(843) 566-2867 — mobile

SITE PLAN



Total building: 6,740 sf

— Office buildout: 5,463 sf

OFFERED BY



(843) 856-4600
www.belklucy.com

Blair Belk, CCIM
blair.belk@belklucy.com
(843) 606-5449 — direct office
(843) 709-9292 — mobile

AND

Trey Lucy
trey.lucy@belklucy.com
(843) 606-5455 — direct office
(843) 566-2867 — mobile