

AVAILABLE - FOR LEASE

89 OLD TROLLEY ROAD SUMMERVILLE, SC 29485

OFFICE



Nearby Retailers



LOCATION

OFFERED BY



(843) 856-4600
www.belklucy.com

Hailey White
hailey.white@belklucy.com
843-856-4800 — office
843-312-9731 — mobile

PROPERTY INFORMATION

PROPERTY DESCRIPTION

Belk | Lucy is pleased to present the exclusive listing for Old Trolley Business Plaza. Located off well traveled Old Trolley Road, this attractive office offers convenient access and excellent visibility. The available suites have functional office layouts and have been updated with fresh paint, carpet, and new lighting. Furnished office suites are also available.

- Twenty-four month minimum lease term.

AREA DESCRIPTION

This property is in close proximity to many area amenities including Harris Teeter, Walgreens, Tuesday Morning, Applebee's, Dollar Tree, Palmetto Flats, and Wayback Burgers, just to name a few. The town of Summerville is situated mostly in Dorchester County and is part of the 800,000-person Charleston, SC MSA. Summerville is a burgeoning community with a strong local economy, beautifully planned neighborhoods, excellent schools, rich history, and plenty of southern hospitality. In the past thirty years, the population of Summerville has increased exponentially as families, business people, and military personnel continue to flock to this charming city.



LEASING OPPORTUNITIES

101B	176 sf	\$950.00/mo FS
205	128 sf	\$750.00/mo FS
208	192 sf	\$950.00/mo FS

DEMOGRAPHICS (5-MILE)

Population	148,239
Households	56,405
Avg. HH Income	\$100,848
Traffic Count	26,100 VPD

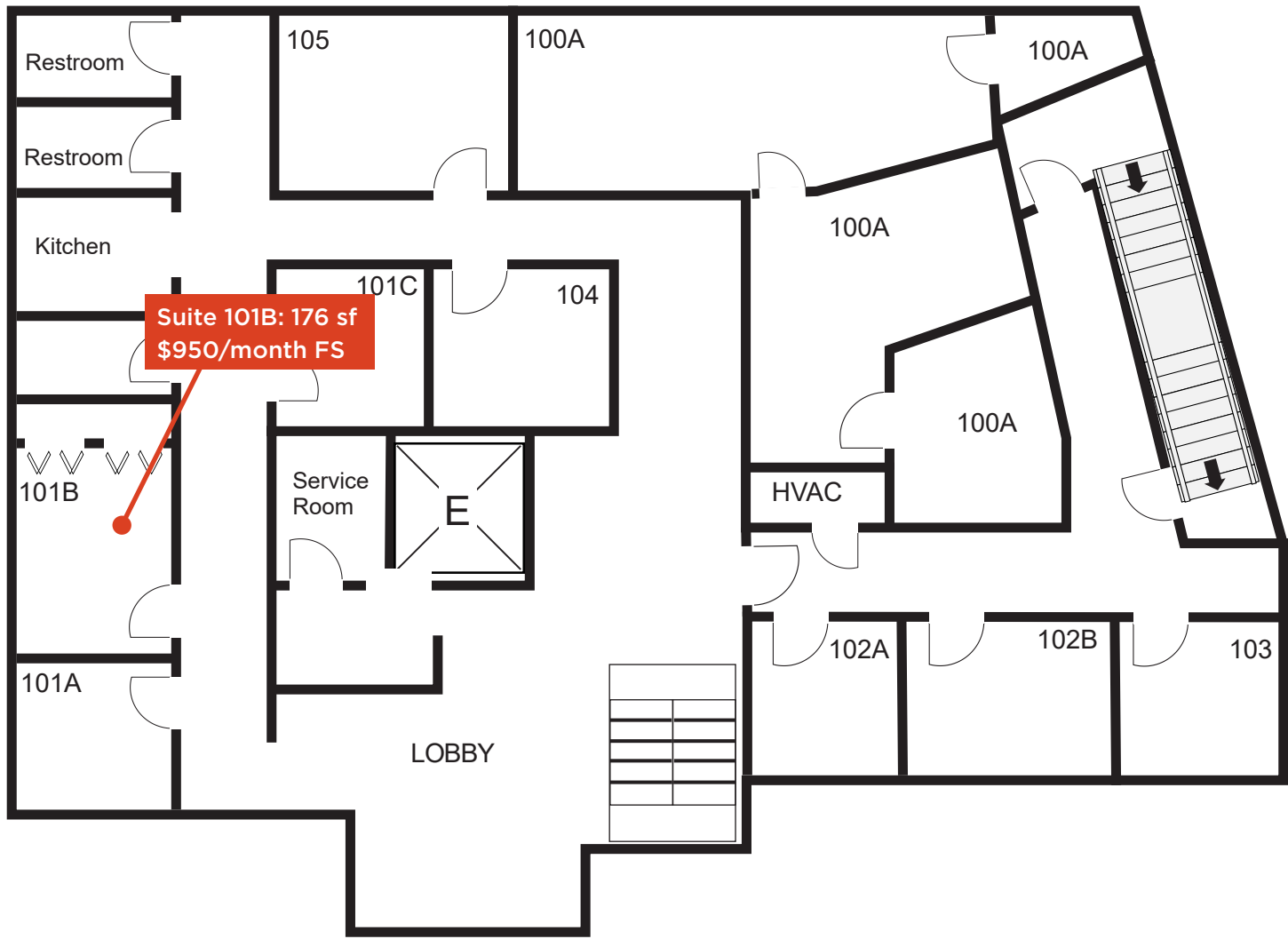
OFFERED BY



(843) 856-4600
www.belklucy.com

Hailey White
hailey.white@belklucy.com
843-856-4800 — office
843-312-9731 — mobile

1ST FLOOR PLAN



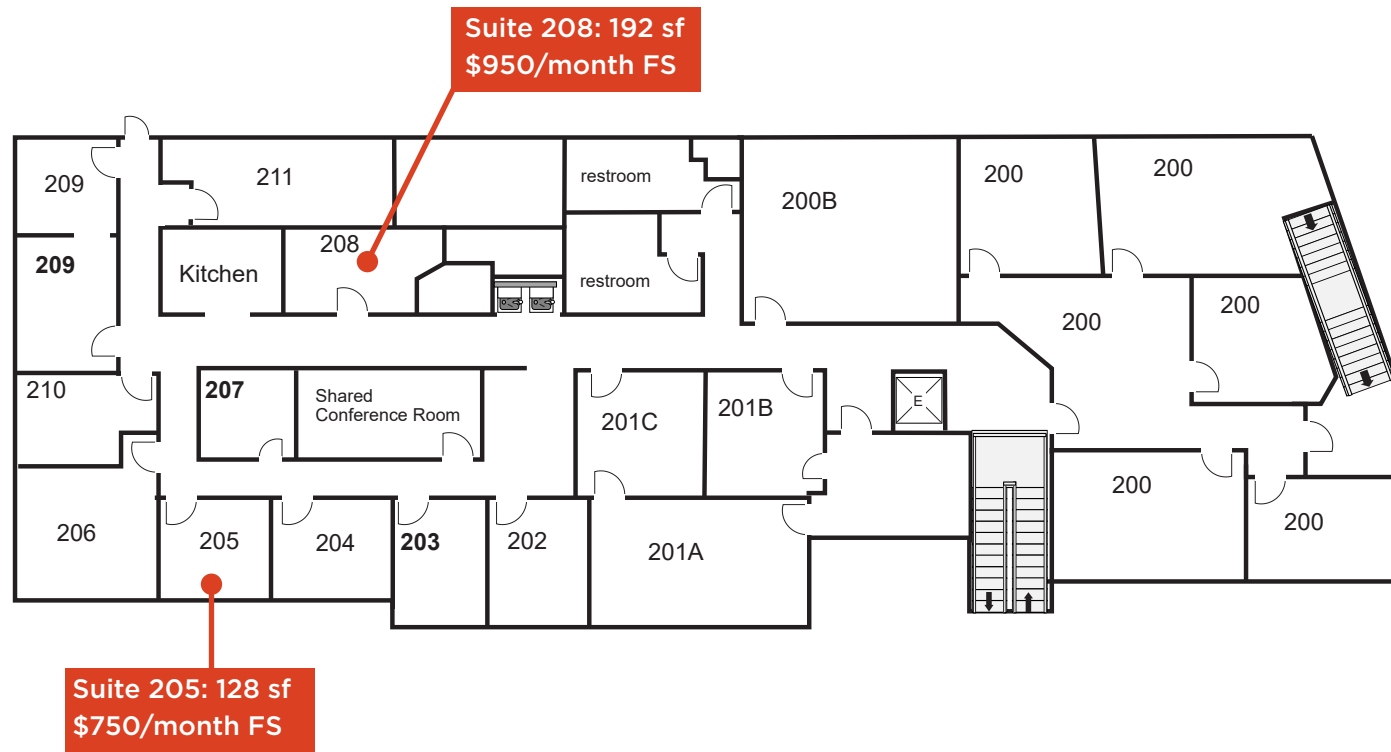
OFFERED BY



(843) 856-4600
www.belklucy.com

Hailey White
hailey.white@belklucy.com
843-856-4800 — office
843-312-9731 — mobile

2ND FLOOR PLAN



OFFERED BY



(843) 856-4600
www.belklucy.com

Hailey White
hailey.white@belklucy.com
843-856-4800 — office
843-312-9731 — mobile