

AVAILABLE - FOR LEASE

BOWMAN PLACE PHASE II, BUILDING A

1336 BOWMAN ROAD MT. PLEASANT, SC

RETAIL | OFFICE

Shop. Dine. Work. Play.



Retailers include:



OFFERED BY



(843) 856-4600
www.belklucy.com

Trey Lucy

trey.lucy@belklucy.com

(843) 606-5455 — direct office

(843) 566-2867 — mobile

AND

Blair Belk, CCIM

blair.belk@belklucy.com

(843) 606-5449 — direct office

(843) 709-9292 — mobile



PROPERTY INFORMATION



AVAILABILITIES

Suite 105	1,237 sf	\$33.00/sf NNN
CAM, Taxes, Ins. (est.)		\$7.75/sf

DEMOGRAPHICS (5-MILE)

Population	77,230
Households	33,489
Avg. HH Income	\$160,145
Traffic Count (Hwy 17)	68,500 vpd
Traffic Count (Bowman Rd)	16,400 vpd

BOWMAN PLACE - PHASE II

Belk | Lucy is pleased to present the exclusive listing for the second phase of Bowman Place, one of Mt. Pleasant's freshest retail destinations. Bowman Place Phase II is a first-class project offering opportunities for both retail and office.

- Join awesome tenant mix including Dick's Sporting Goods, Nordstrom Rack, DSW, J.Crew Factory, Two Cumberland, Kairos Mediterranean, Vitamin Shoppe, and XFinity
- Capitalize on high visibility and existing retail traffic from Phase I
- Benefit from easy ingress and egress and convenient location at intersection of I-526 and Hwy 17 (Johnnie Dodds Blvd)
- Meet your business needs and wants with forward-thinking buildings

OFFERED BY



(843) 856-4600
www.belklucy.com

Trey Lucy
trey.lucy@belklucy.com
(843) 606-5455 — direct office
(843) 566-2867 — mobile

AND

Blair Belk, CCIM
blair.belk@belklucy.com
(843) 606-5449 — direct office
(843) 709-9292 — mobile

SITE PLAN



Birds eye view East

BOWMAN PLACE

OFFERED BY



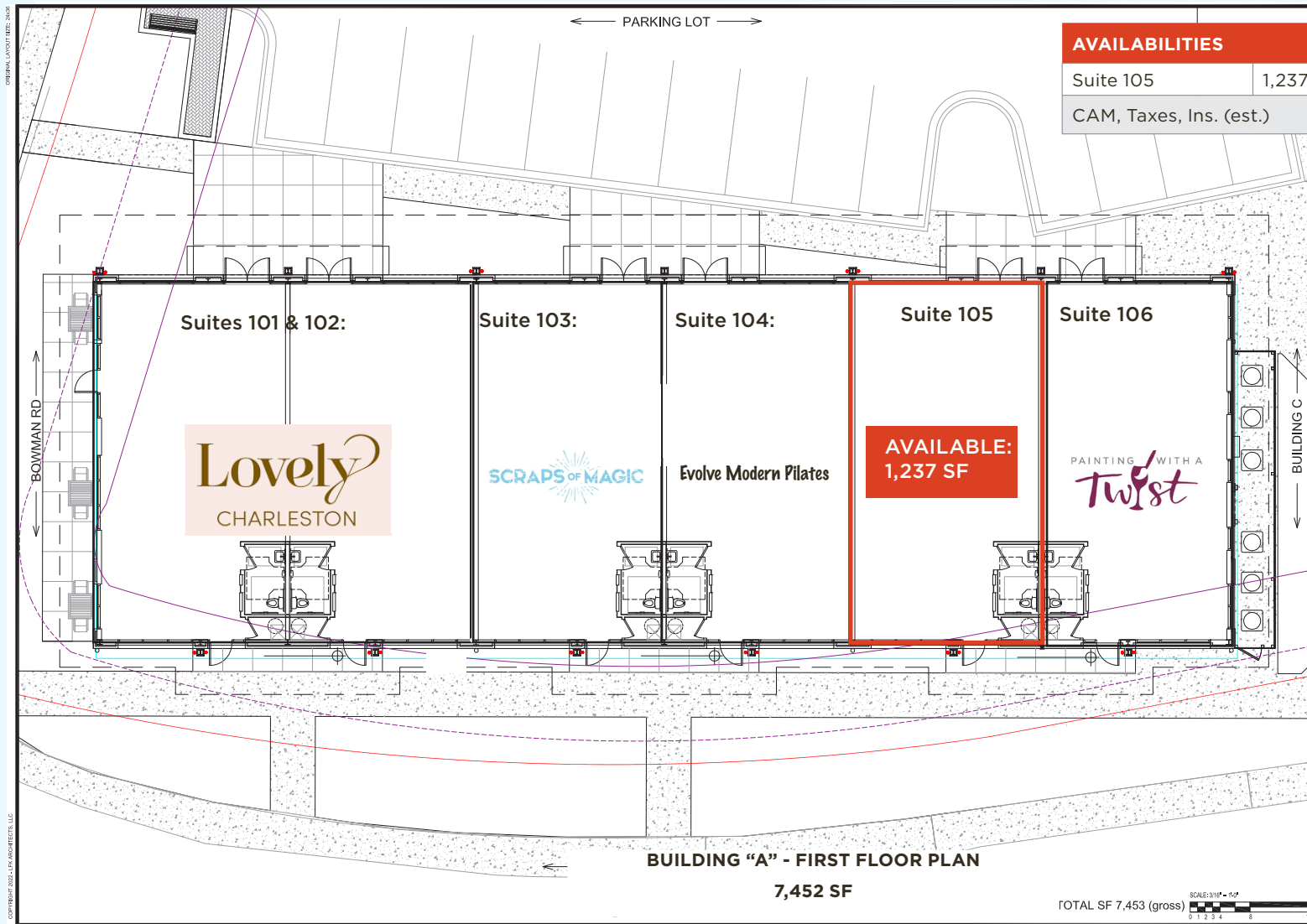
(843) 856-4600
 www.belklucy.com

Trey Lucy
 trey.lucy@belklucy.com
 (843) 606-5455 — direct office
 (843) 566-2867 — mobile

AND

Blair Belk, CCIM
 blair.belk@belklucy.com
 (843) 606-5449 — direct office
 (843) 709-9292 — mobile

BUILDING A PLAN



AVAILABILITIES		
Suite 105	1,237 sf	\$33.00/sf NNN
CAM, Taxes, Ins. (est.)		\$7.75/sf

BOWMAN PLACE

OFFERED BY



(843) 856-4600
www.belklucy.com

Trey Lucy
trey.lucy@belklucy.com
(843) 606-5455 — direct office
(843) 566-2867 — mobile

AND

Blair Belk, CCIM
blair.belk@belklucy.com
(843) 606-5449 — direct office
(843) 709-9292 — mobile

AVAILABLE - FOR LEASE

BOWMAN PLACE PHASE II, BUILDING A

1336 BOWMAN ROAD MT. PLEASANT, SC

AERIAL



OFFERED BY



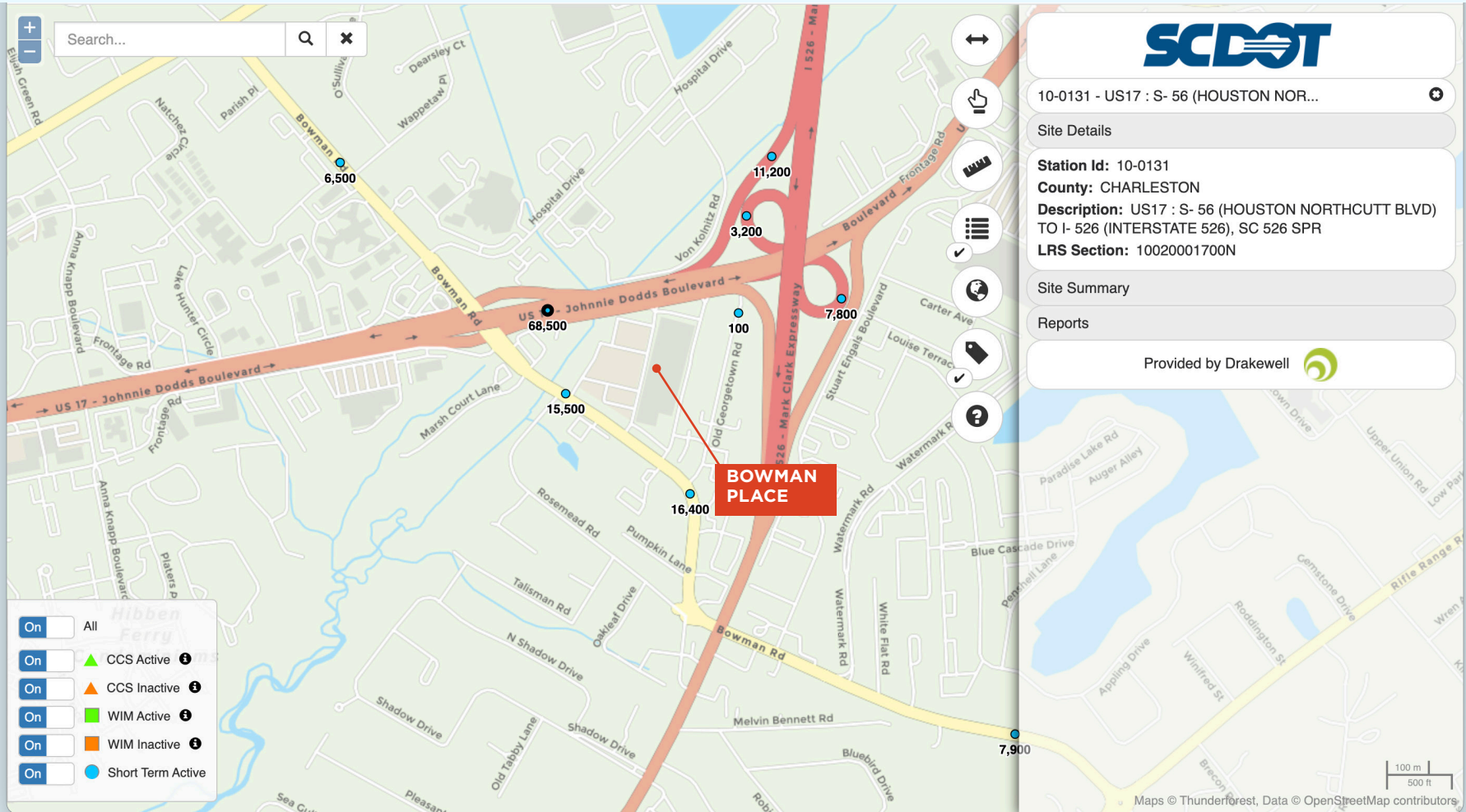
(843) 856-4600
www.belklucy.com

Trey Lucy
trey.lucy@belklucy.com
(843) 606-5455 — direct office
(843) 566-2867 — mobile

AND

Blair Belk, CCIM
blair.belk@belklucy.com
(843) 606-5449 — direct office
(843) 709-9292 — mobile

TRAFFIC COUNT MAP



OFFERED BY



(843) 856-4600
www.belklucy.com

Trey Lucy
trey.lucy@belklucy.com
(843) 606-5455 — direct office
(843) 566-2867 — mobile

AND

Blair Belk, CCIM
blair.belk@belklucy.com
(843) 606-5449 — direct office
(843) 709-9292 — mobile