

AVAILABLE - FOR LEASE

CARNES STATION

1129 - 1135 SAINT JAMES AVENUE, SUMMERVILLE, SC 29486

RETAIL | OFFICE | MEDICAL



Area  
amenities:



OFFERED BY



(843) 856-4600  
[www.belklucy.com](http://www.belklucy.com)

Blair Belk, CCIM  
[blair.belk@belklucy.com](mailto:blair.belk@belklucy.com)  
(843) 606-5449 — direct office  
(843) 709-9292 — mobile

AND

Trey Lucy  
[trey.lucy@belklucy.com](mailto:trey.lucy@belklucy.com)  
(843) 606-5455 --- direct office  
(843) 566-2867 --- mobile





## PROPERTY INFORMATION



## PROPERTY DESCRIPTION

Belk | Lucy is pleased to present the exclusive listing for Carnes Station ideally positioned on well traveled Saint James Avenue. Site work is complete on this multi-building retail | office center which will feature Class A construction and thoughtful design. Located in the heart of Carnes Crossroads area, this property has excellent visibility and convenient access in a high-growth market. Opportunities exist for retail, medical, office and restaurant users. Several end-cap suites will be delivered with grease traps.

## AREA DESCRIPTION

This property is situated in the Carnes Crossroads area of Summerville/Goose Creek, SC. This area surrounding the intersection of Highway 176 (St. James Ave.) and Highway 17A (N Main St.) has easy access to both downtown Charleston and historic Summerville. Beautiful master-planned communities and numerous amenities surround this growing area.

## TERMS AND CONDITIONS

Size	1,193 - 7,464 sf
Rate	\$29.00-38.00/sf NNN
CAM, Taxes, and Ins. (est)	\$7.50/sf

## DEMOGRAPHICS (5-MILE)

Population	116,1136
Households	43,554
Average Household Income	\$104,052
Traffic Count	22,800 VPD

OFFERED BY



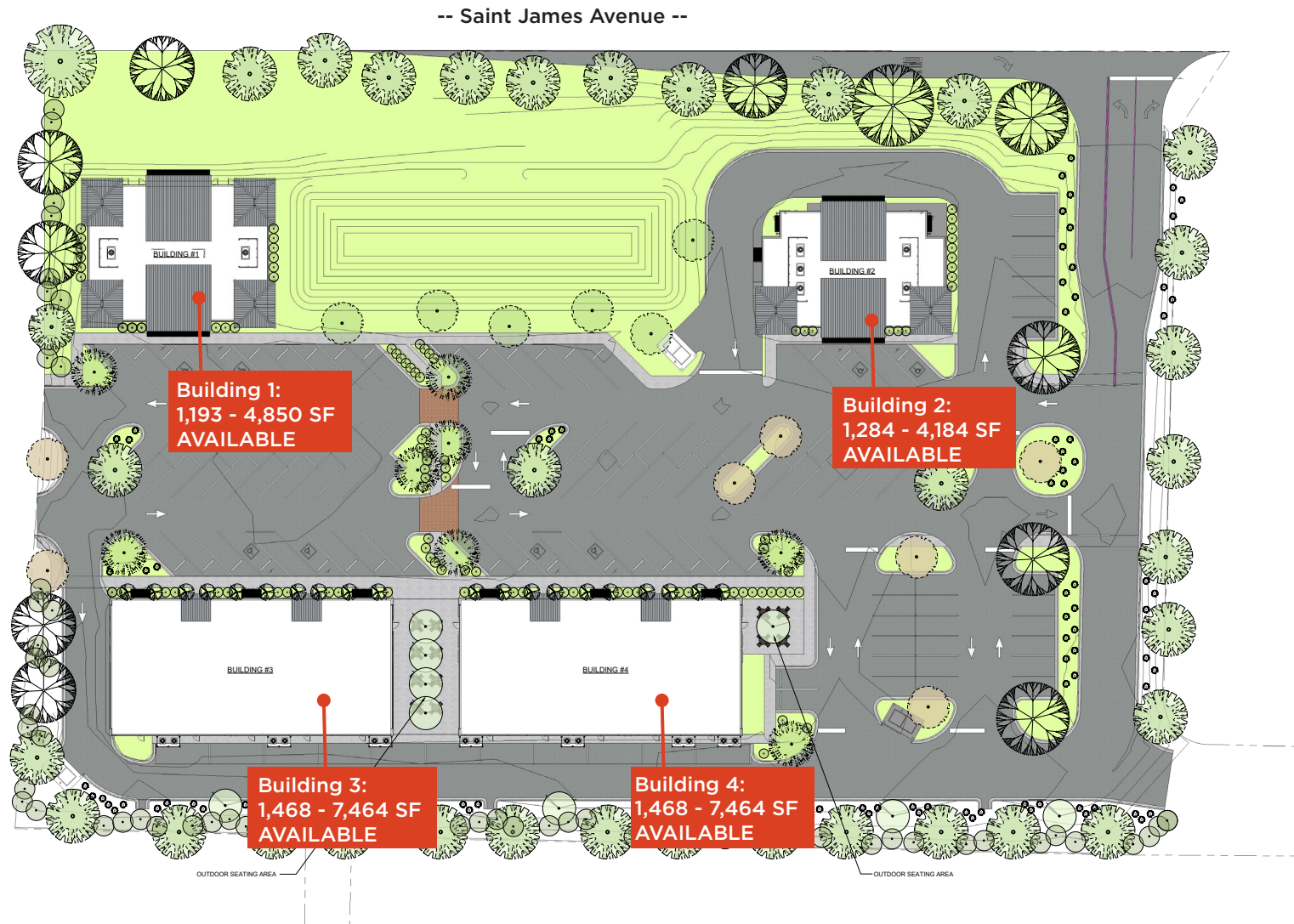
(843) 856-4600  
www.belklucy.com

Blair Belk , CCIM  
blair.belk@belklucy.com  
(843) 606-5449 — direct office  
(843) 709-9292 — mobile

AND

Trey Lucy  
trey.lucy@belklucy.com  
(843) 606-5455 --- direct office  
(843) 566-2867 --- mobile

## SITE PLAN



OFFERED BY



(843) 856-4600  
[www.belklucy.com](http://www.belklucy.com)

Blair Belk, CCIM

[blair.belk@belklucy.com](mailto:blair.belk@belklucy.com)

(843) 606-5449 — direct office

(843) 709-9292 — mobile

AND

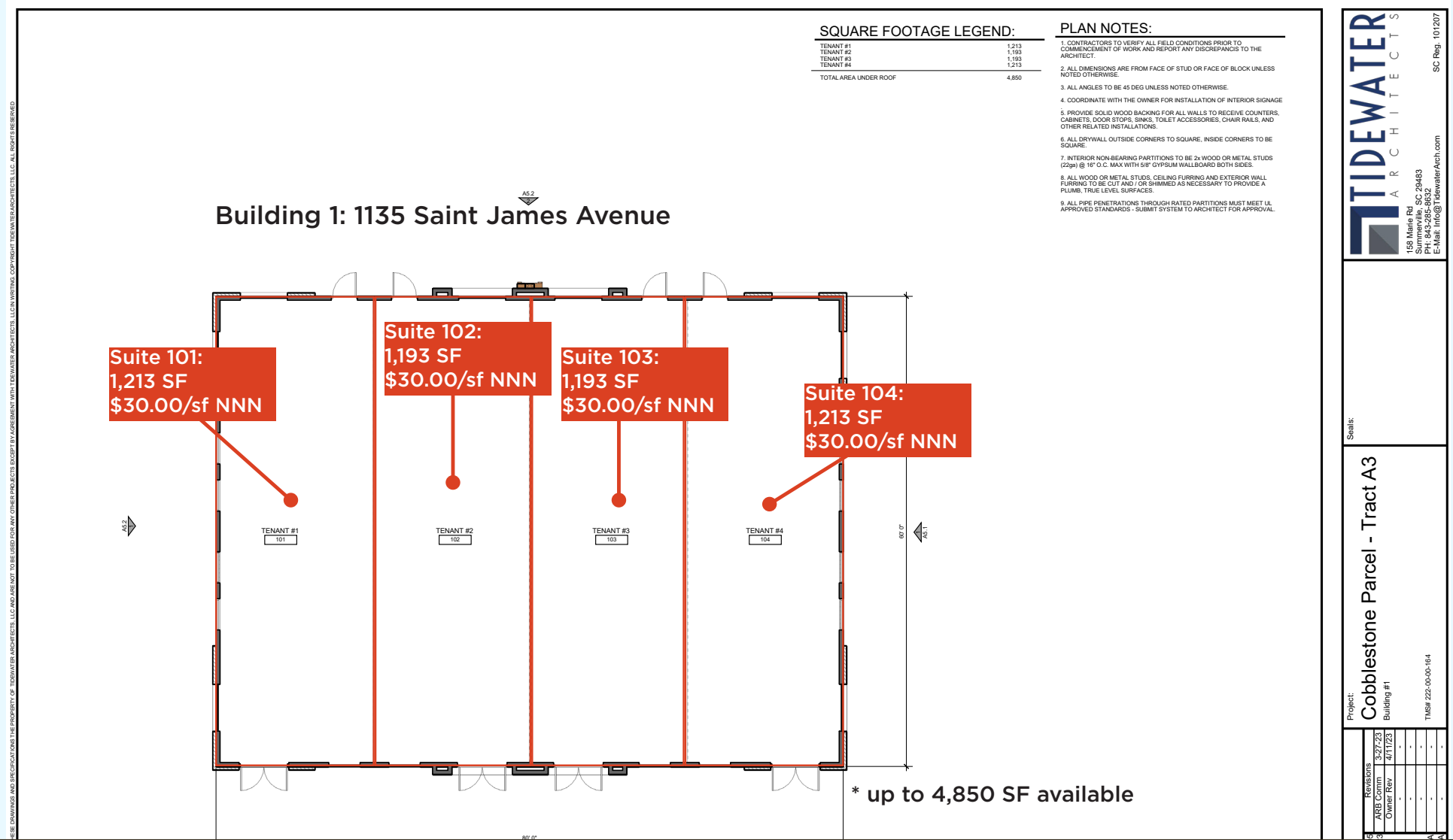
Trey Lucy

[trey.lucy@belklucy.com](mailto:trey.lucy@belklucy.com)

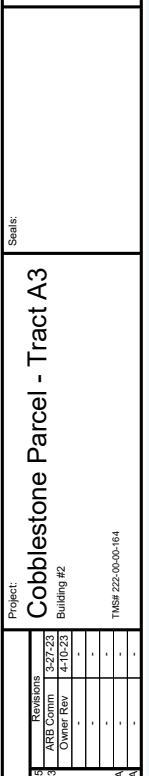
(843) 606-5455 --- direct office

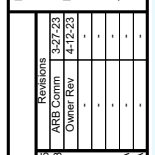
(843) 566-2867 --- mobile

BUILDING 1



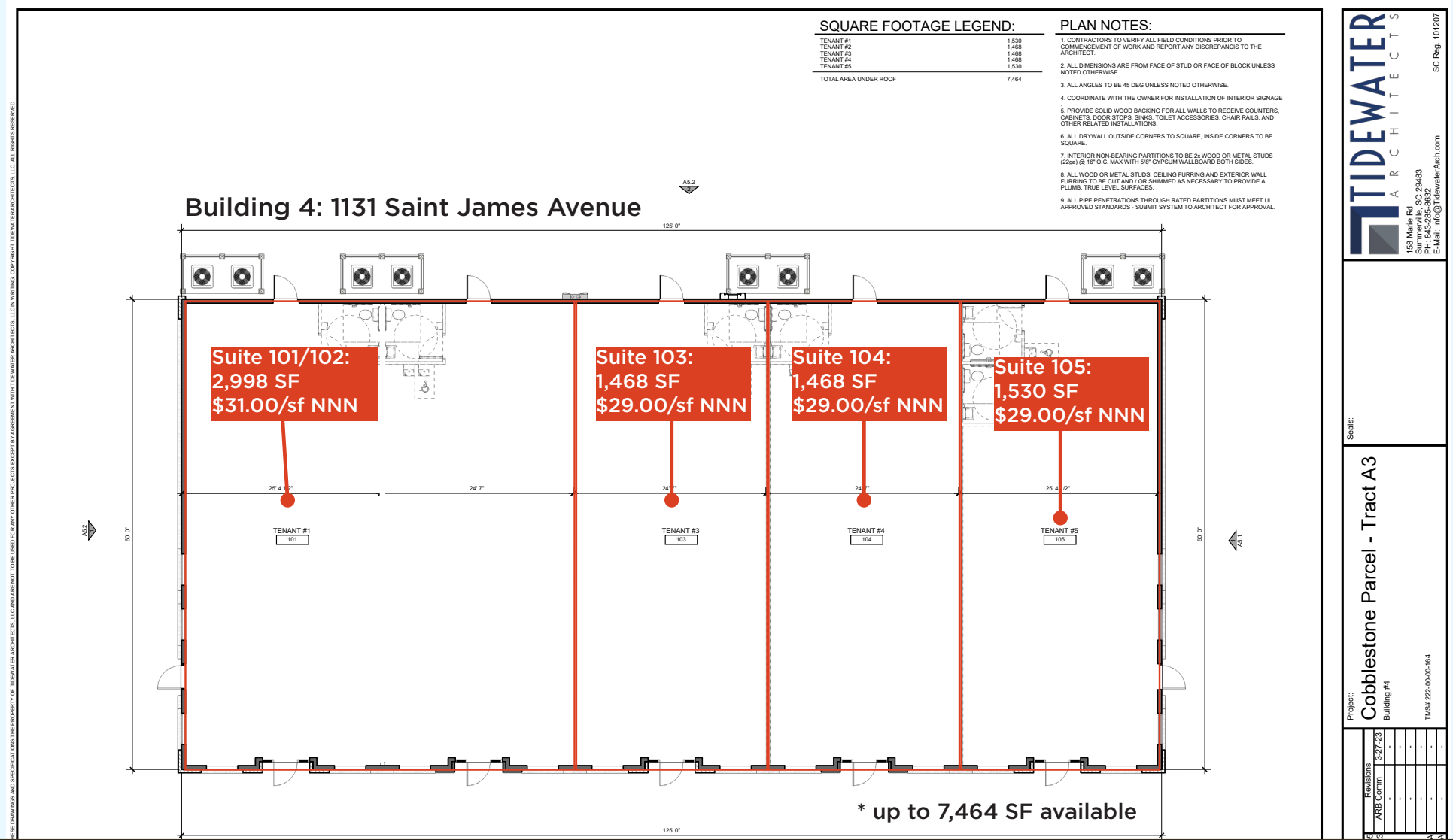








BUILDING 4



AVAILABLE - FOR LEASE

CARNES STATION

1129 - 1135 SAINT JAMES AVENUE, SUMMERVILLE, SC 29486

CONSTRUCTION PROGRESS



OFFERED BY



(843) 856-4600  
[www.belklucy.com](http://www.belklucy.com)

Blair Belk , CCIM  
[blair.belk@belklucy.com](mailto:blair.belk@belklucy.com)  
(843) 606-5449 — direct office  
(843) 709-9292 — mobile

AND

Trey Lucy  
[trey.lucy@belklucy.com](mailto:trey.lucy@belklucy.com)  
(843) 606-5455 --- direct office  
(843) 566-2867 --- mobile



AVAILABLE - FOR LEASE

CARNES STATION

1129 - 1135 SAINT JAMES AVENUE, SUMMERVILLE, SC 29486

DRONE



OFFERED BY



(843) 856-4600  
[www.belklucy.com](http://www.belklucy.com)

Blair Belk , CCIM  
[blair.belk@belklucy.com](mailto:blair.belk@belklucy.com)  
(843) 606-5449 — direct office  
(843) 709-9292 — mobile

AND

Trey Lucy  
[trey.lucy@belklucy.com](mailto:trey.lucy@belklucy.com)  
(843) 606-5455 --- direct office  
(843) 566-2867 --- mobile