

AVAILABLE - FOR SALE

10215 COTTAGEVILLE HIGHWAY COTTAGEVILLE, SC 29435



COMMERCIAL DEVELOPMENT

AVAILABLE:  
5.0 ACRES

Cottageville Highway

OFFERED BY



(843) 856-4600  
www.belklucy.com

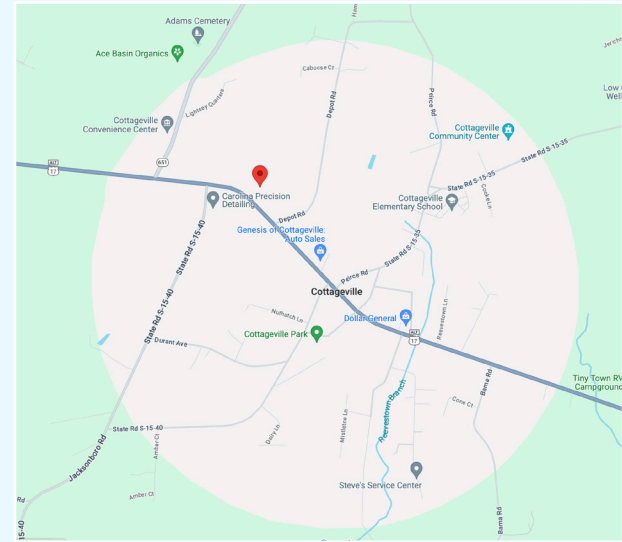
Trey Lucy  
trey.lucy@belklucy.com  
(843) 606-5455 — direct office  
(843) 566-2867 — mobile

AND

Blair Belk, CCIM  
blair.belk@belklucy.com  
(843) 606-5449 — direct office  
(843) 709-9292 — mobile



**PROPERTY INFORMATION**



**PROPERTY DESCRIPTION**

Belk Lucy is pleased to present the exclusive listing for 10215 Cottageville Highway. This 5.0 acre parcel is positioned on Cottageville Highway (Highway 17A) in the heart of the town. The parcel is cleared and zoned for commercial use.

**AREA DESCRIPTION**

Cottageville is located in Colleton County, which is positioned in the southeastern portion of the state designated as the Lowcountry region. This picturesque rural community prides itself on its rich history, charm and hospitality. Bordered by Charleston County to the east and Dorchester County to the northeast, Cottageville is within commuting distance for the Charleston, SC MSA. Given Charleston's exponential expansion, there is growth potential for all surrounding areas.

**TERMS AND CONDITIONS**

Size	5.0 Acres
Price	\$975,000

**DEMOGRAPHICS (5-MILE)**

Population	4,780
Households	1,920
Avg. HH Income	\$92,924

OFFERED BY



(843) 856-4600  
www.belklucy.com

Trey Lucy  
trey.lucy@belklucy.com  
(843) 606-5455 — direct office  
(843) 566-2867 — mobile

AND

Blair Belk, CCIM  
blair.belk@belklucy.com  
(843) 606-5449 — direct office  
(843) 709-9292 — mobile

AVAILABLE - FOR SALE

10215 COTTAGEVILLE HIGHWAY COTTAGEVILLE, SC 29435

DRONE



OFFERED BY



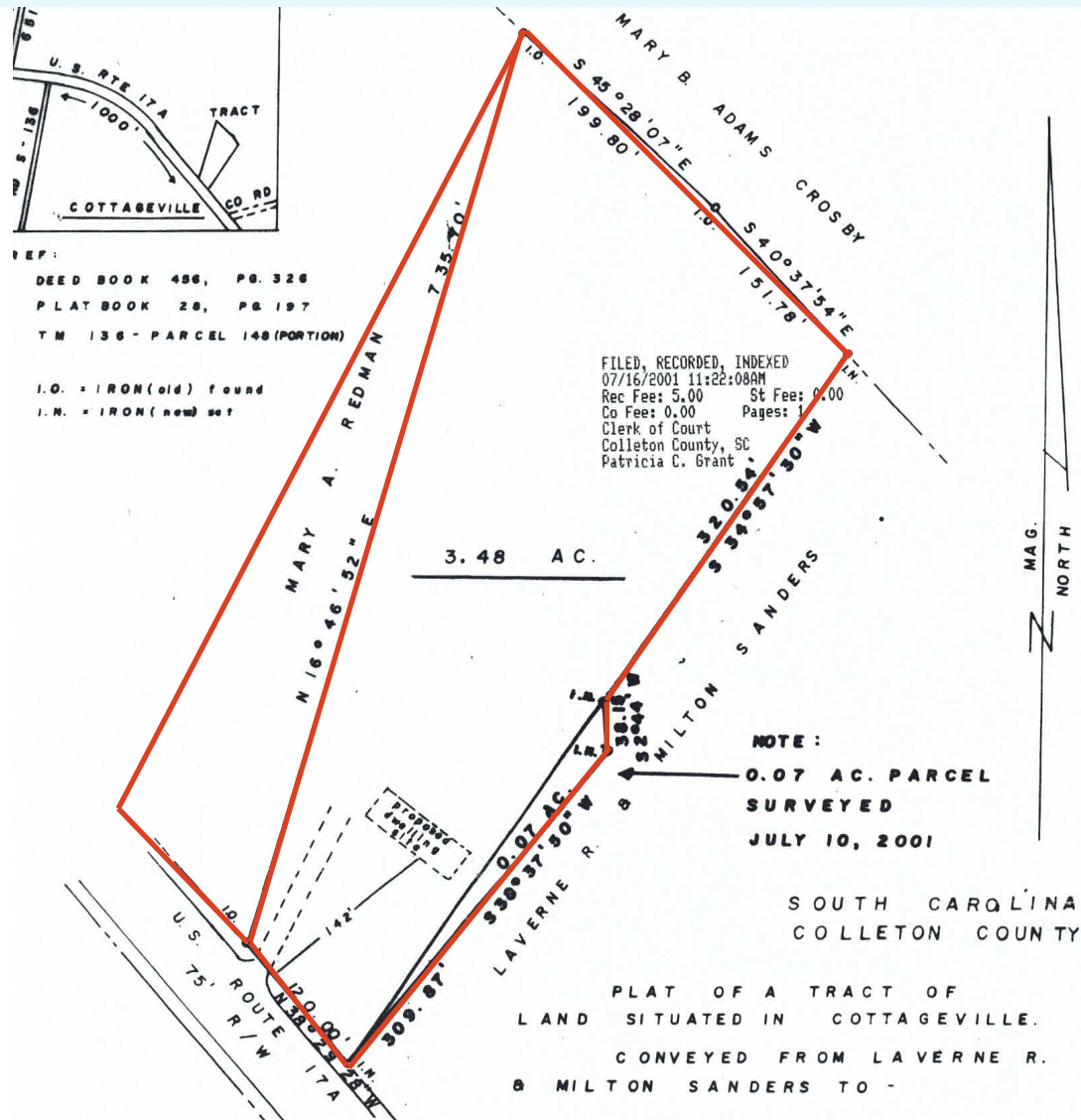
(843) 856-4600  
www.belklucy.com

Trey Lucy  
trey.lucy@belklucy.com  
(843) 606-5455 — direct office  
(843) 566-2867 — mobile

AND

Blair Belk, CCIM  
blair.belk@belklucy.com  
(843) 606-5449 — direct office  
(843) 709-9292 — mobile

PLAT



OFFERED BY



(843) 856-4600  
www.belklucy.com

Trey Lucy  
trey.lucy@belklucy.com  
(843) 606-5455 — direct office  
(843) 566-2867 — mobile

AND

Blair Belk, CCIM  
blair.belk@belklucy.com  
(843) 606-5449 — direct office  
(843) 709-9292 — mobile