



COMMERCIAL DEVELOPMENT

Residential Parcel:
57.1 acres

Commercial Parcel:
5.0 acres

OFFERED BY



(843) 856-4600
www.belklucy.com

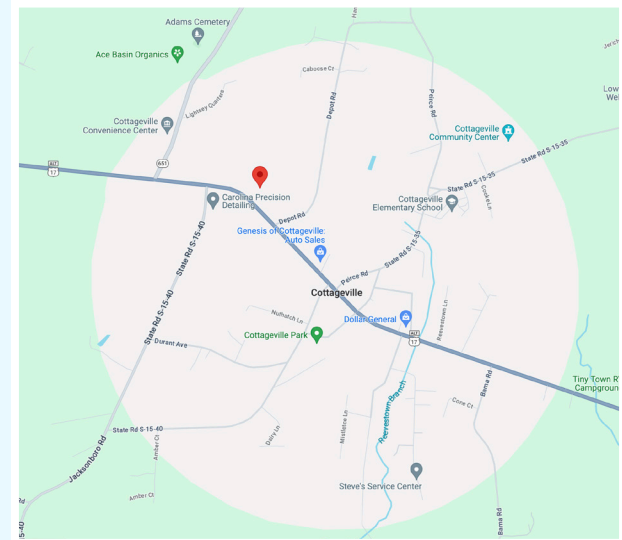
Trey Lucy
trey.lucy@belklucy.com
(843) 606-5455 — direct office
(843) 566-2867 — mobile

AND

Blair Belk, CCIM
blair.belk@belklucy.com
(843) 606-5449 — direct office
(843) 709-9292 — mobile



PROPERTY INFORMATION



PROPERTY DESCRIPTION

Belk Lucy is pleased to present the exclusive listing located at Cottageville Highway and Depot Road in Cottageville, SC. Totalling 62.1 acres, this parcel is positioned on Cottageville Highway (Highway 17A) in the heart of the town. The 57.1-acre tract is an excellent opportunity for a residential development. The smaller 5-acre parcel is cleared and zoned for commercial use.

AREA DESCRIPTION

Cottageville is located in Colleton County, which is positioned in the southeastern portion of the state designated as the Lowcountry region. This picturesque rural community prides itself on its rich history, charm and hospitality. Bordered by Charleston County to the east and Dorchester County to the northeast, Cottageville is within commuting distance for the Charleston, SC MSA. Given Charleston's exponential expansion, there is growth potential for all surrounding areas.

TERMS AND CONDITIONS

Size	62.1 Acres
Price	\$1,500,000.00

DEMOGRAPHICS (5-MILE)

Population	4,780
Households	1,920
Avg. HH Income	\$ 92,924

OFFERED BY



(843) 856-4600
www.belklucy.com

Trey Lucy
trey.lucy@belklucy.com
(843) 606-5455 — direct office
(843) 566-2867 — mobile

AND

Blair Belk, CCIM
blair.belk@belklucy.com
(843) 606-5449 — direct office
(843) 709-9292 — mobile

AVAILABLE - FOR SALE

10215 COTTAGEVILLE HIGHWAY COTTAGEVILLE, SC 29435

DRONE



OFFERED BY



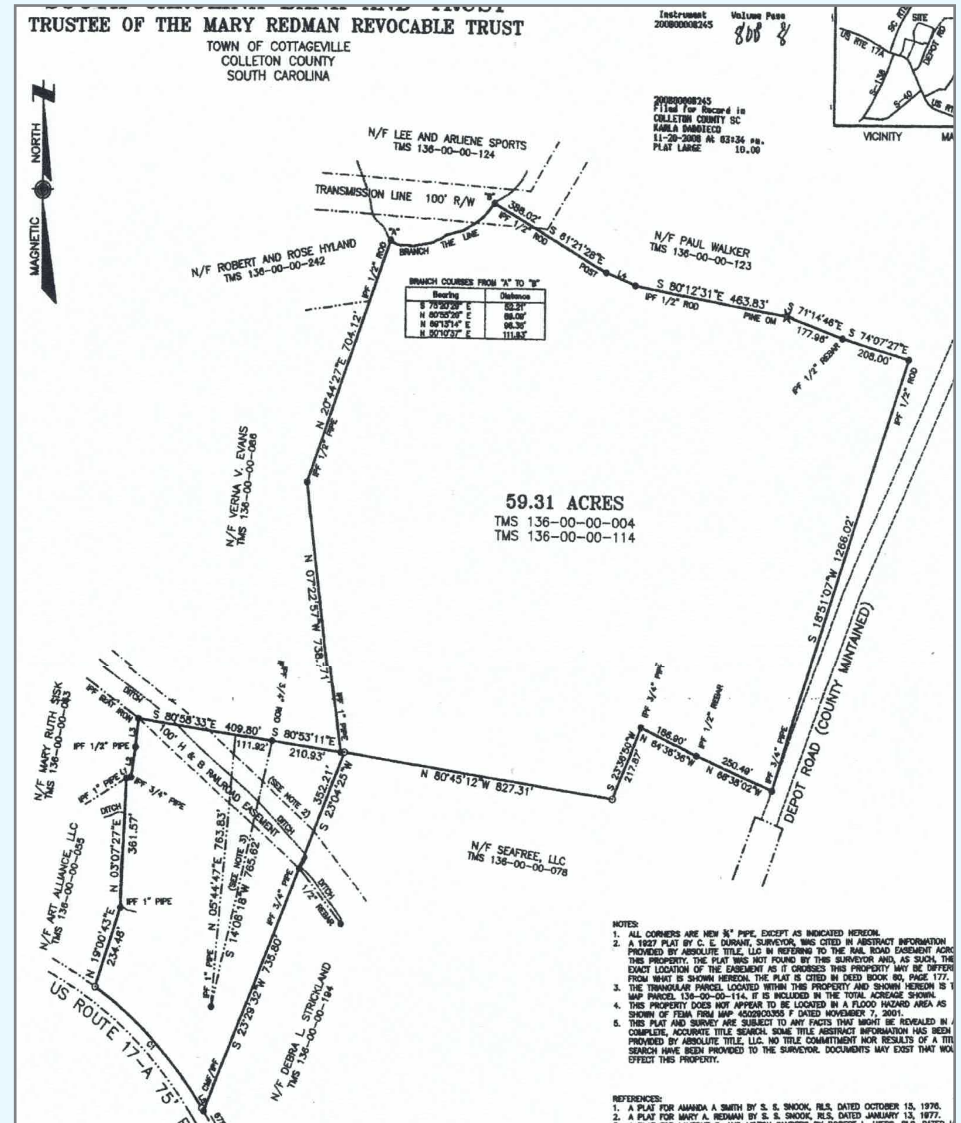
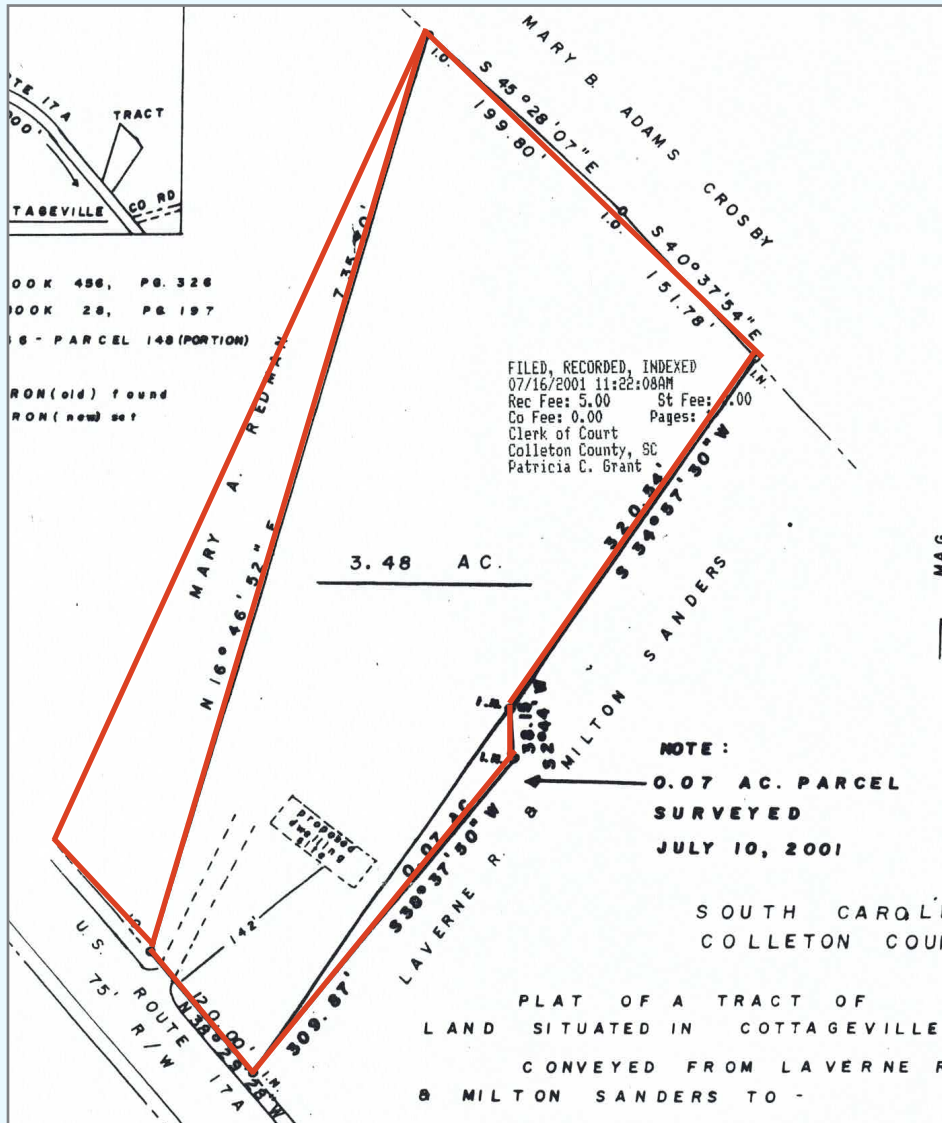
(843) 856-4600
www.belklucy.com

Trey Lucy
trey.lucy@belklucy.com
(843) 606-5455 — direct office
(843) 566-2867 — mobile

AND

Blair Belk, CCIM
blair.belk@belklucy.com
(843) 606-5449 — direct office
(843) 709-9292 — mobile

PLATS



OFFERED BY



(843) 856-4600
www.belklucy.com

Trey Lucy
trey.lucy@belklucy.com
(843) 606-5455 — direct office
(843) 566-2867 — mobile

AND

Blair Belk, CCIM
blair.belk@belklucy.com
(843) 606-5449 — direct office
(843) 709-9292 — mobile