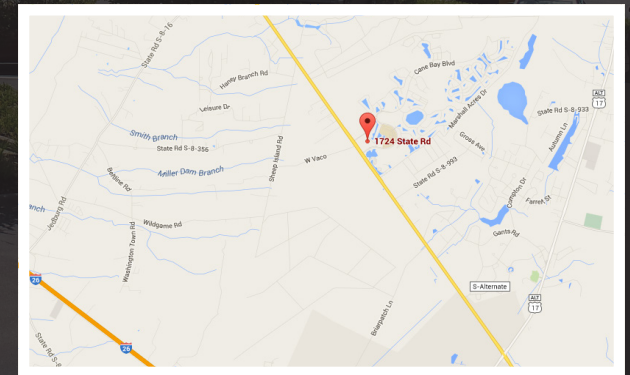


AVAILABLE - FOR LEASE

THE MARKET AT CANE BAY

1724 STATE ROAD SUMMERVILLE, SC

RETAIL CENTER



Other Shops include



LOCATION

OFFERED BY



(843) 856-4600  
www.belklucy.com

Trey Lucy

trey.lucy@belklucy.com

(843) 606-5455 — direct office

(843) 566-2867 — mobile

AND

Blair Belk, CCIM

blair.belk@belklucy.com

(843) 606-5449 — direct office

(843) 709-9292 — mobile



## PROPERTY INFORMATION



The Market at Cane Bay is a Publix anchored shopping center located at the intersection of Highway 176 and Cane Bay Boulevard at the entrance to Cane Bay Plantation in Summerville, SC. The 45,600 square foot Publix opened in October 2011 and features 27,113 square feet of retail shop space. The shopping center is directly across from Cane Bay High School, one of the largest high school campuses in the state.

Cane Bay Plantation was the 4th best-selling master-planned community in the US in 2022 with an impressive 959 homes sold. It also earned its ranking as #1 top-selling community for the last several years in the tri-country area as well as in the state of South Carolina. At capacity, this community will house roughly 13,000 homes. Offering convenience, top-rated schools, and numerous amenities, this well-established and fast-growing community is an excellent opportunity to join other successful area businesses.

## LEASING OPPORTUNITIES

FULLY LEASED.

CAM, Taxes, and Ins. (est.)	\$ 8.43/sf
-----------------------------	------------

## DEMOGRAPHICS (3-MILE)

Population	23,145
Households	8,217
Avg. HH Income	\$ 109,386

OFFERED BY



(843) 856-4600  
www.belklucy.com

Trey Lucy

trey.lucy@belklucy.com

(843) 606-5455 — direct office

(843) 566-2867 — mobile

AND

Blair Belk, CCIM

blair.belk@belklucy.com

(843) 606-5449 — direct office

(843) 709-9292 — mobile

## SITE PLAN



OFFERED BY



(843) 856-4600  
www.belklucy.com

Trey Lucy

trey.lucy@belklucy.com

(843) 606-5455 — direct office

(843) 566-2867 — mobile

AND

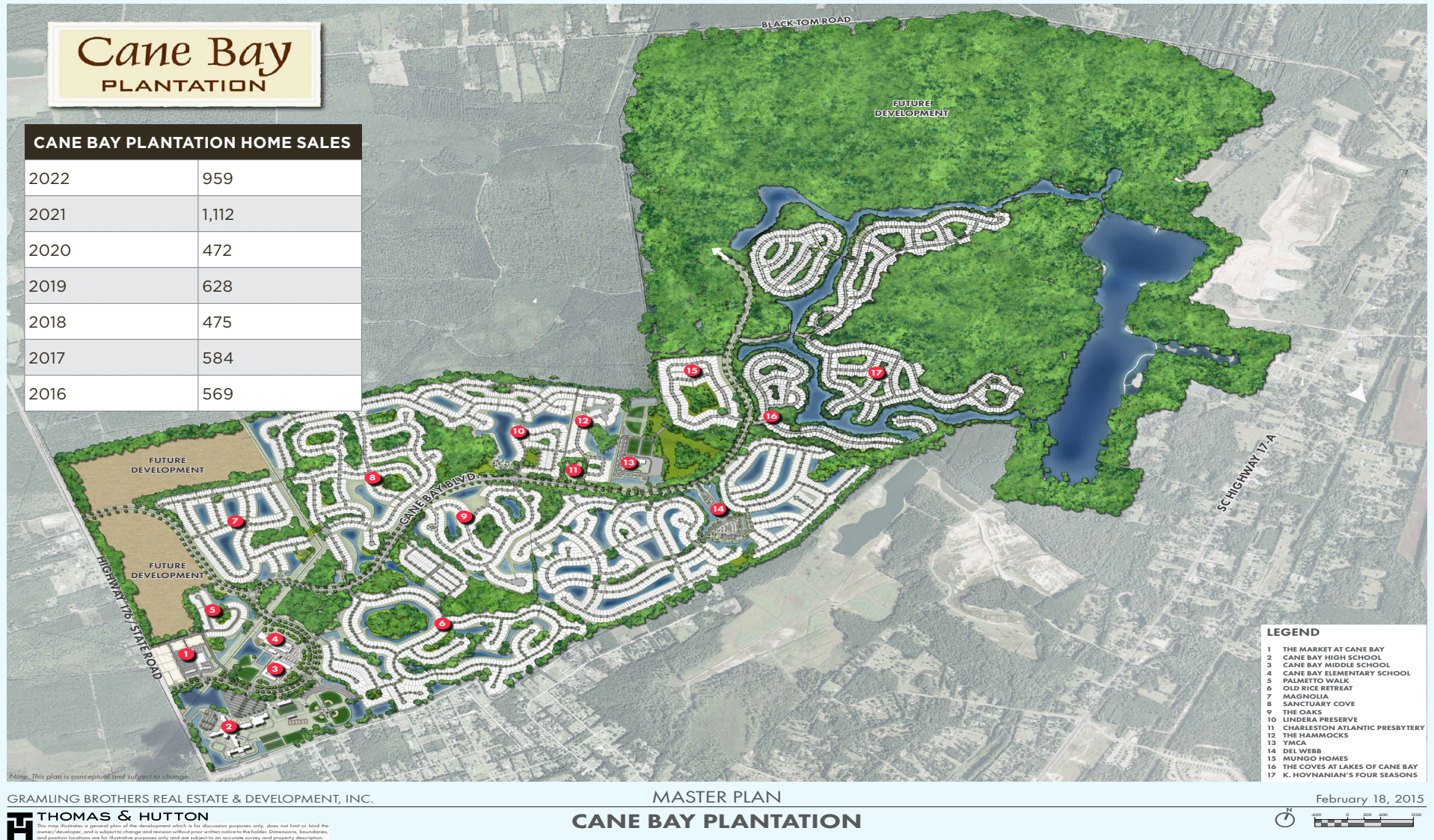
Blair Belk, CCIM

blair.belk@belklucy.com

(843) 606-5449 — direct office

(843) 709-9292 — mobile

## MASTER PLAN



OFFERED BY



(843) 856-4600  
www.belklucy.com

Trey Lucy

trey.lucy@belklucy.com

(843) 606-5455 — direct office

(843) 566-2867 — mobile

AND

Blair Belk, CCIM

blair.belk@belklucy.com

(843) 606-5449 — direct office

(843) 709-9292 — mobile