

AVAILABLE - FOR SALE

HIGHWAY 17 NORTH MCCLELLANVILLE, SC 29458

COMMERCIAL LAND

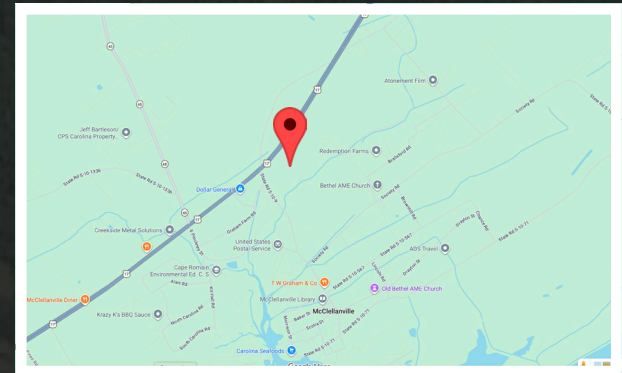
AVAILABLE:
3.0 ACRES

State Rd S-10-9

State Rd S-10-9

17

17



LOCATION

OFFERED BY



(843) 856-4600
www.belklucy.com

Morrow Boggs
morrow.boggs@belklucy.com
(843) 606-5460— direct
(843) 998-5234— mobile

PROPERTY INFORMATION



PROPERTY DESCRIPTION

Belk | Lucy is pleased to present the exclusive listing for Highway 17 North in McClellanville, SC. This 3.0-acre parcel is ideally positioned on Highway 17 North in the heart of McClellanville. This parcel has excellent visibility and accessibility. Zoned commercial, this property is well suited for retail or office use. This is an excellent opportunity to establish a business in the heart of McClellanville.

AREA DESCRIPTION

McClellanville, South Carolina is an authentic Lowcountry community positioned between Charleston and Georgetown. This charming town is located by the Intercoastal Waterway and surrounded by the Francis Marion National Forest. This picturesque town is steeped with history, charm and nature.

TERMS AND CONDITIONS

Size	3.0 acres
Price	\$300,000

DEMOGRAPHICS (5-MILE)

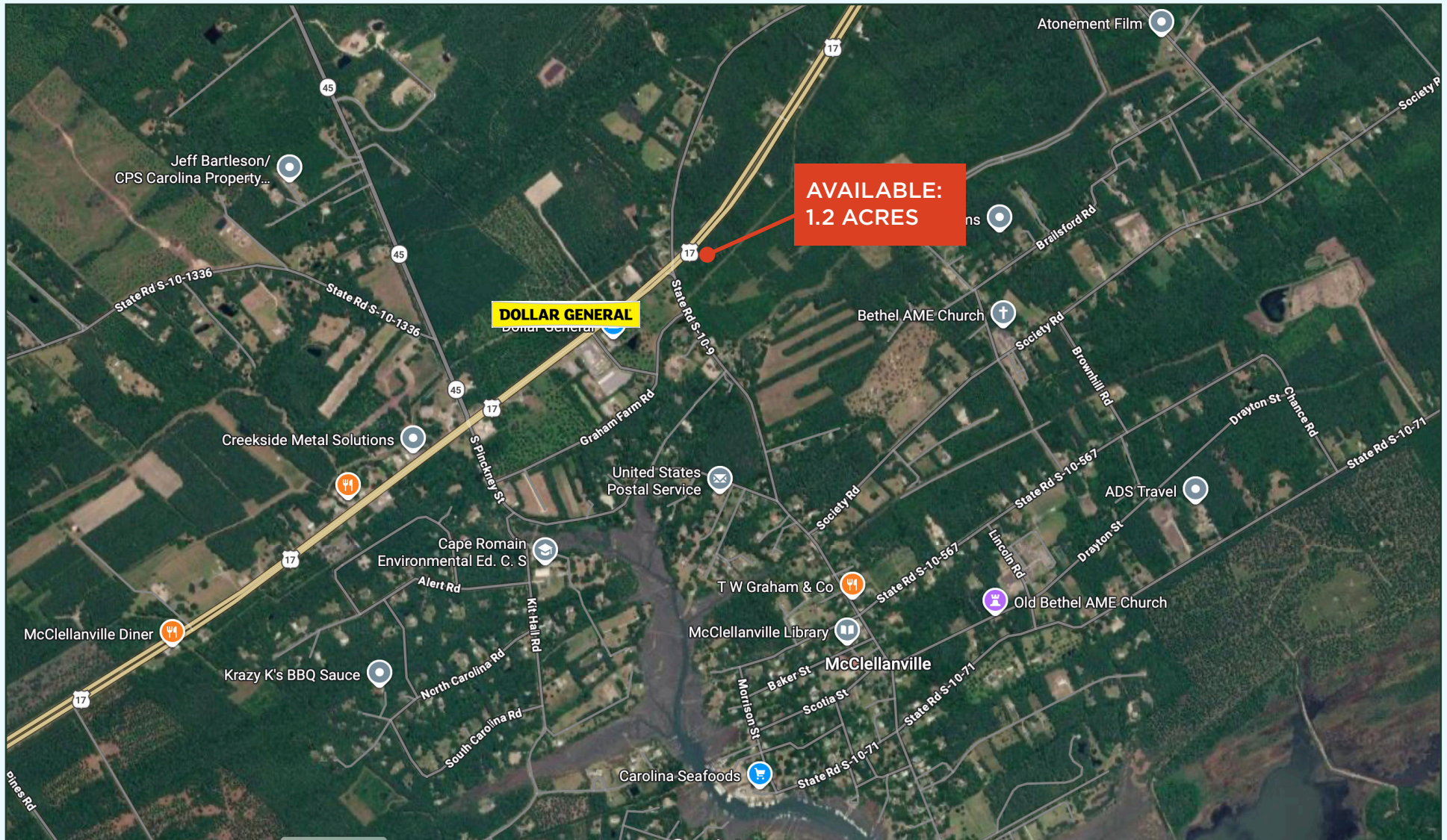
Population	1,887
Households	810
Avg. HH Income	\$88,494

OFFERED BY



(843) 856-4600
www.belklucy.com

Morrow Boggs
morrow.boggs@belklucy.com
(843) 606-5460— direct
(843) 998-5234— mobile



OFFERED BY



(843) 856-4600
www.belklucy.com

Morrow Boggs
morrow.boggs@belklucy.com
(843) 606-5460— direct
(843) 998-5234— mobile