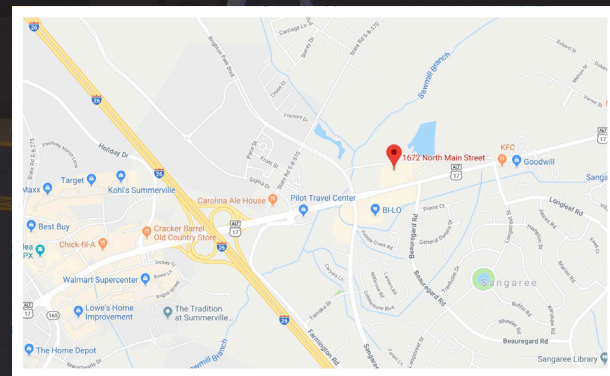


AVAILABLE - FOR LEASE NORTH PLANTATION SQUARE

1672 N MAIN STREET SUMMERVILLE, SC 29483

RETAIL | OFFICE



Other Shops include



LOCATION

OFFERED BY



(843) 856-4600
www.belklucy.com

Trey Lucy
trey.lucy@belklucy.com
(843) 606-5455 — direct office
(843) 566-2867 — mobile

AND

Morrow Boggs
morrow.boggs@belklucy.com
(843) 606-5460 — direct office
(843) 998-5234 — mobile



PROPERTY INFORMATION



PROPERTY DESCRIPTION

Belk | Lucy is pleased to present the exclusive listing for North Plantation Square, ideally located on well-traveled Highway 17A which contains the main thoroughfare connecting Moncks Corner to I-26. This shopping center is well maintained and has excellent visibility. Pylon signage is available. Co-tenants include Tractor Supply Co, Results Physiotherapy, Subway, Family Dollar, Enterprise and Pizza Hut, just to name a few.

AREA DESCRIPTION

The town of Summerville is situated mostly in Dorchester County and is part of the 850,000-person Charleston, SC MSA. Summerville is a burgeoning community with a strong local economy, beautifully planned neighborhoods, excellent schools, rich history, and plenty of southern hospitality. In the past thirty years, the population of Summerville has increased exponentially as families, business people, and military personnel continue to flock to charming city.

TERMS AND CONDITIONS

FULLY LEASED.

CAM, Taxes, and Ins. (est)	\$3.72/sf
----------------------------	-----------

DEMOGRAPHICS (3-MILE)

Population	55,450
Households	22,379
Avg. HH Income	\$98,987
Traffic Count	44,000 VPD

OFFERED BY



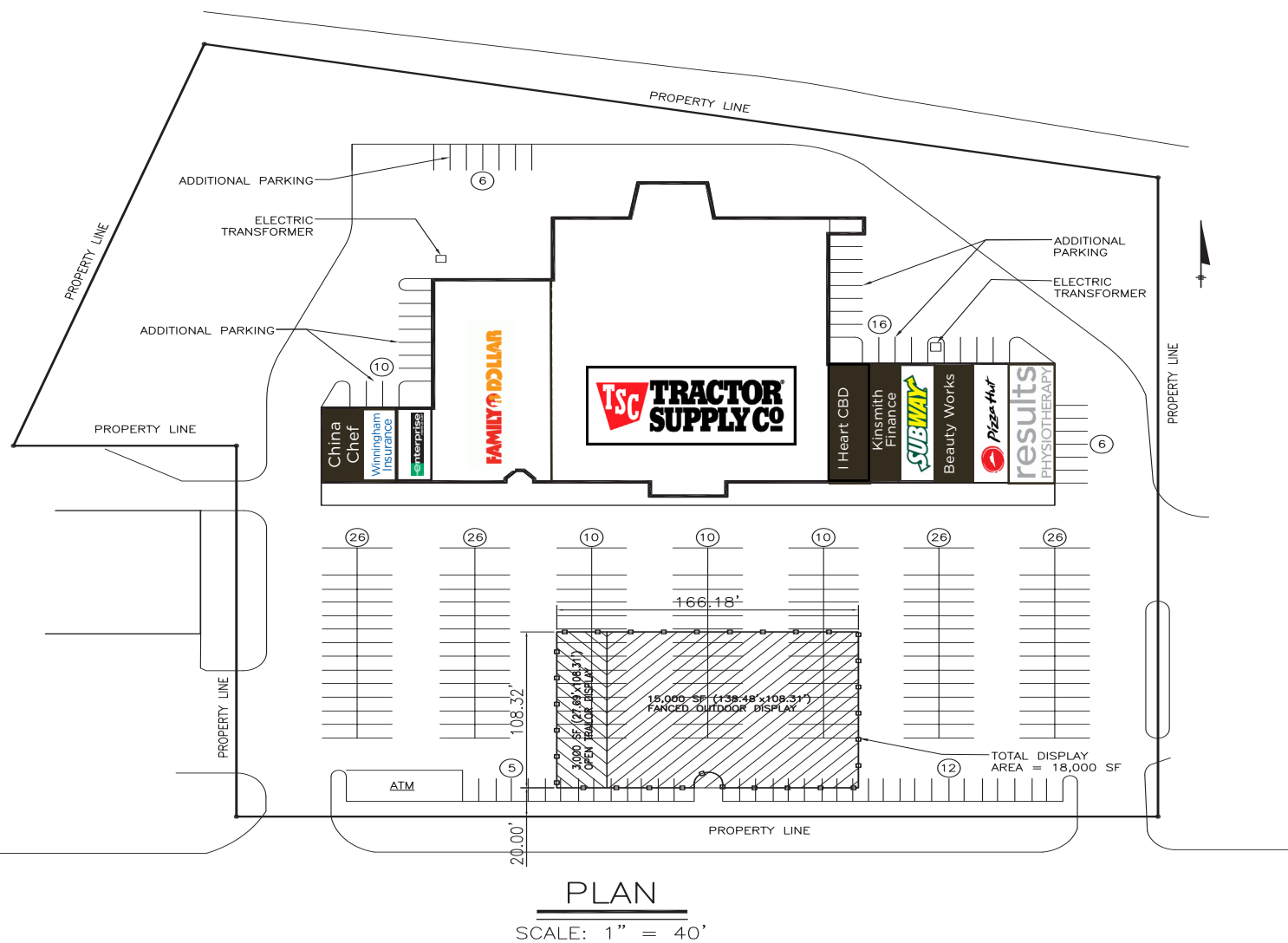
(843) 856-4600
www.belklucy.com

Trey Lucy
trey.lucy@belklucy.com
(843) 606-5455 — direct office
(843) 566-2867 — mobile

AND

Morrow Boggs
morrow.boggs@belklucy.com
(843) 606-5460 — direct office
(843) 998-5234 — mobile

SITE PLAN



OFFERED BY



(843) 856-4600
www.belklucy.com

Trey Lucy
trey.lucy@belklucy.com
(843) 606-5455 — direct office
(843) 566-2867 — mobile

AND

Morrow Boggs
morrow.boggs@belklucy.com
(843) 606-5460 — direct office
(843) 998-5234 — mobile