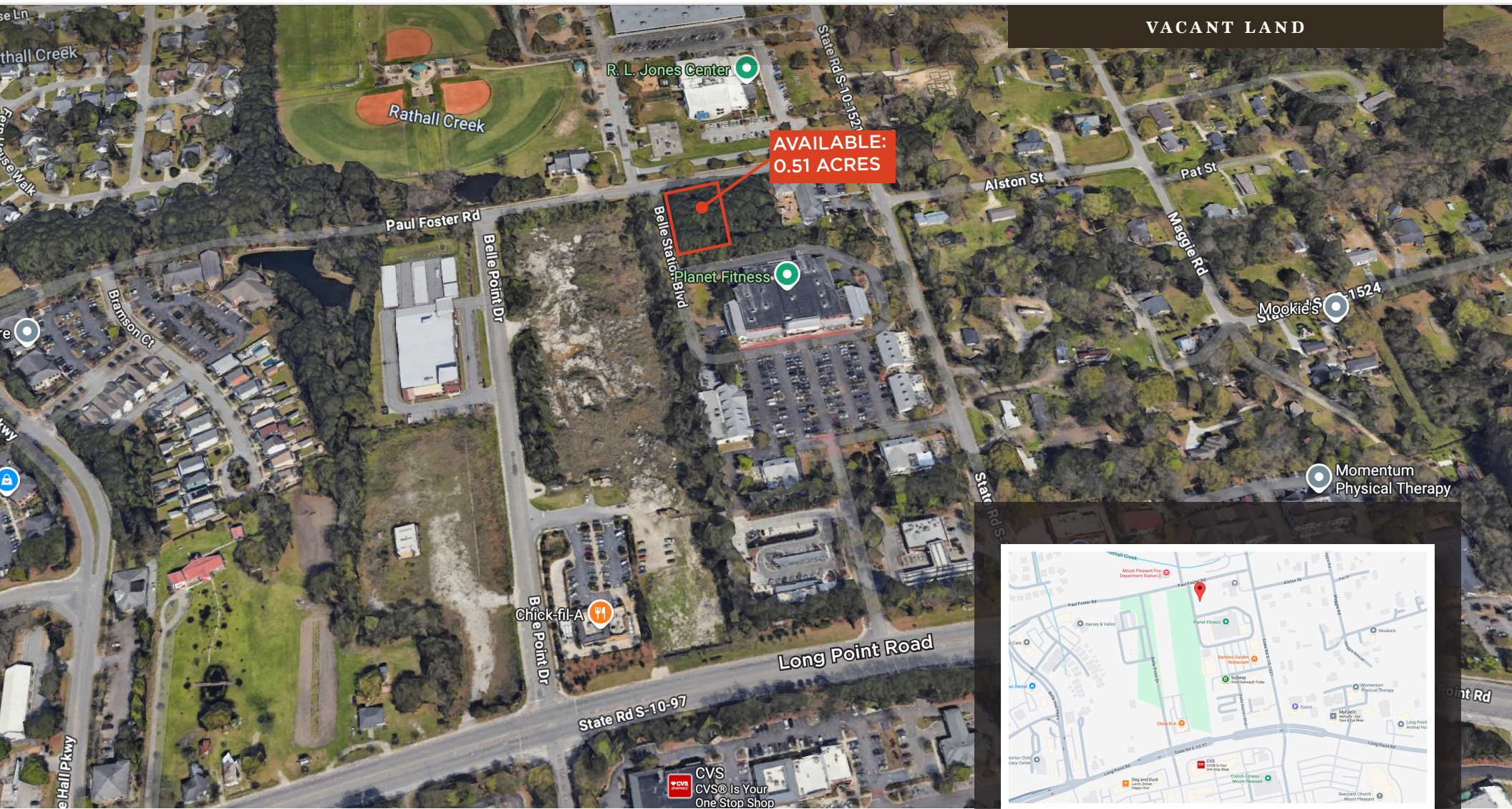


AVAILABLE - FOR SALE

PAUL FOSTER ROAD MT. PLEASANT, SC 29464



VACANT LAND

AVAILABLE:  
0.51 ACRES

Momentum  
Physical Therapy

Nearby retailers  
include:



**Harris Teeter**  
YOUR NEIGHBORHOOD MARKET



OFFERED BY

**belk  
lucy**

(843) 856-4600  
www.belklucy.com

Kevin Shields  
kevin.shields@belklucy.com  
(843) 936-1715 — direct office  
(843) 593-7119 — mobile

AND

Blair Belk, CCIM  
blair.belk@belklucy.com  
(843) 606-5449 — direct office  
(843) 709-9292 — mobile



## PROPERTY INFORMATION

## PROPERTY DESCRIPTION

Belk | Lucy is pleased to present the exclusive listing for 0.51 acres on Paul Foster Road in Mount Pleasant, SC. Situated at the corner of Paul Foster Road and Belle Station Boulevard, just off Long Point Road, this commercial lot is conveniently located. The half acre site is zoned PD (Planned Development) and ideally positioned in an amenity-rich area.

## AREA DESCRIPTION

The Town of Mount Pleasant is an affluent South Carolina coastal community which is part of the 850,000-person Charleston, SC Metropolitan Statistical Area. The town is one of the fastest-growing municipalities in the Southeast and the state's fourth-largest municipality. Known for its high quality of life, people flock to this charming suburban town for its proximity to area beaches, outdoor activities, shopping and dining amenities, and laid-back atmosphere. Additionally, this dynamic community has proven to be an outstanding location for business, offering a highly desirable lifestyle to attract and retain key employees, while providing an available "highly skilled" regional workforce.



## TERMS AND CONDITIONS

Size	0.51 acres
Price	\$650,000

## DEMOGRAPHICS (3-MILE)

Population	40,081
Households	17,641
Avg. HH Income	\$164,155

OFFERED BY



(843) 856-4600  
www.belklucy.com

Kevin Shields  
kevin.shields@belklucy.com  
(843) 936-1715 — direct office  
(843) 593-7119 — mobile

AND

Blair Belk, CCIM  
blair.belk@belklucy.com  
(843) 606-5449 — direct office  
(843) 709-9292 — mobile