

AVAILABLE - FOR LEASE

THE PLAZA AT PARK WEST

1110-1118 PARK WEST BLVD. MT. PLEASANT, SC 29466

RETAIL | OFFICE



Nearby Amenities



LOCATION

OFFERED BY



(843) 856-4600  
[www.belklucy.com](http://www.belklucy.com)

Trey Lucy  
 trey.lucy@belklucy.com  
 (843) 606-5455 — direct office  
 (843) 566-2867 — mobile

AND

Blair Belk, CCIM  
 blair.belk@belklucy.com  
 (843) 606-5449 — direct office  
 (843) 709-9292 — mobile

PROPERTY INFORMATION

PROPERTY DESCRIPTION

Belk | Lucy is pleased to present the exclusive listing for The Plaza at Park West, a retail/office project well located at the entrance to the Park West subdivision, one of Mt. Pleasant’s largest master planned communities. This highly visible center is directly across Park West Blvd. from the Publix anchored center and is in close proximity to schools and recreational fields. Co-Tenants include, Papa John’s Pizza, Joey Bag ‘a Donuts, Park West Jiu-Jitsu, Carmen Y Juan’s, Village Cleaners, Preferred Eye Care Center, Powerglo Yoga and Pro Nails.

AREA DESCRIPTION

The Town of Mount Pleasant is an affluent South Carolina coastal community which is part of the 800,000-person Charleston, SC Metropolitan Statistical Area. Designated an “All-American City” in 2018, the town is South Carolina’s fourth largest municipality. A leader in growth, this flourishing community was recently ranked number one fastest-growing city in the state and number two fastest-growing city in the country. Known for its high quality of life, people flock to this charming suburban town for its proximity to area beaches, outdoor activities, shopping and dining amenities, and laid-back atmosphere. Additionally, this dynamic community has proven to be an outstanding location for business, offering a highly desirable lifestyle to attract and retain key employees, while providing an available “highly skilled” regional workforce.



LEASING OPPORTUNITIES

Suite 2B	1,445 sf	\$28.00/sf NNN
CAM, Taxes, and Ins. (est.)		\$9.10/sf

DEMOGRAPHICS (5-MILE)

Population	60,838
Households	23,913
Avg. HH Income	\$170,277

OFFERED BY



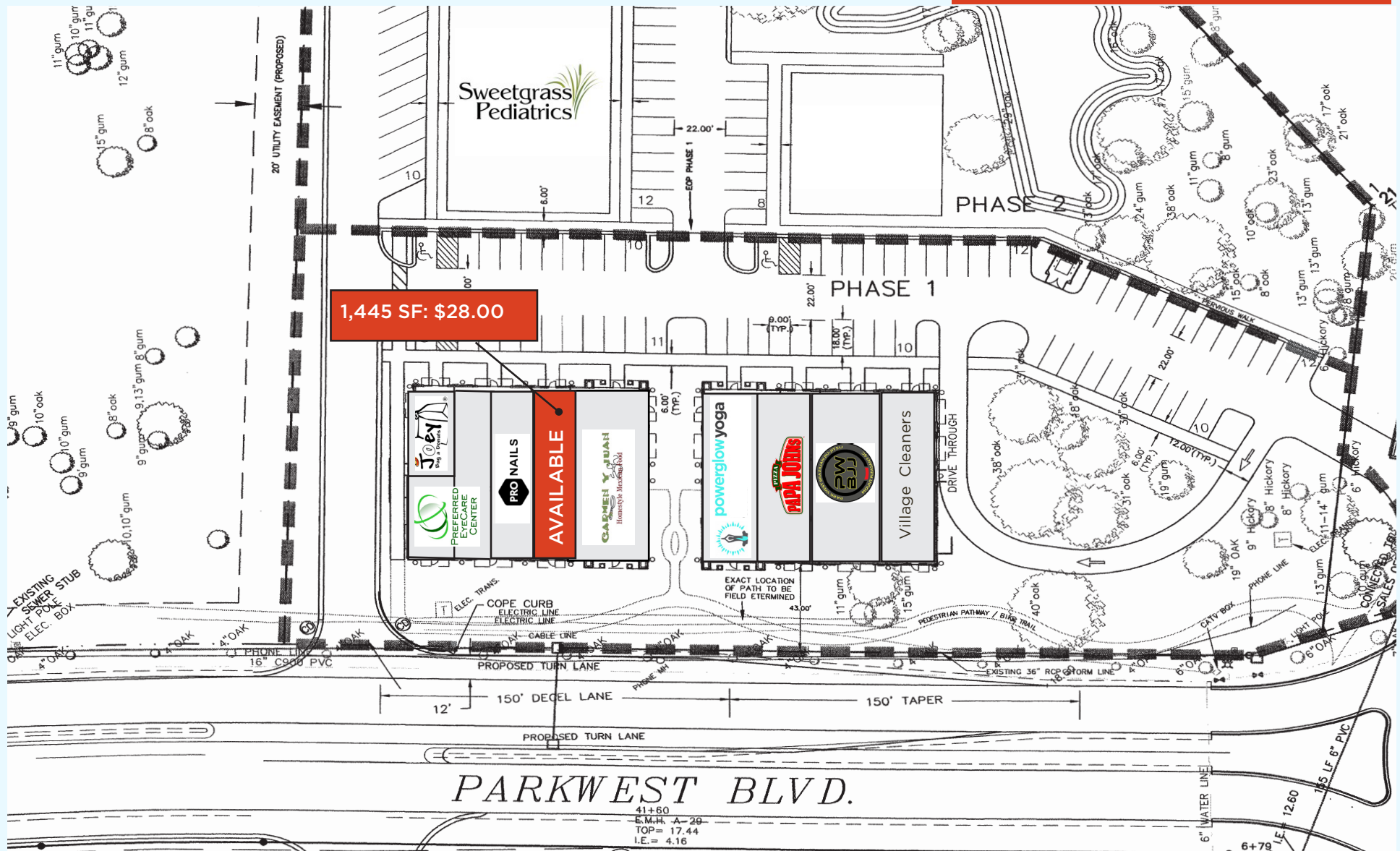
(843) 856-4600  
www.belklucy.com

Trey Lucy  
trey.lucy@belklucy.com  
(843) 606-5455 — direct office  
(843) 566-2867 — mobile

AND

Blair Belk, CCIM  
blair.belk@belklucy.com  
(843) 606-5449 — direct office  
(843) 709-9292 — mobile

SITE PLAN



OFFERED BY



(843) 856-4600  
www.belklucy.com

Trey Lucy  
trey.lucy@belklucy.com  
(843) 606-5455 — direct office  
(843) 566-2867 — mobile

AND

Blair Belk, CCIM  
blair.belk@belklucy.com  
(843) 606-5449 — direct office  
(843) 709-9292 — mobile